



DP WORLD

# WE MAKE TRADE FLOW TO CHANGE WHAT'S POSSIBLE FOR EVERYONE

## DP WORLD CONSTANTA - ROMANIA

With a dedicated, diverse and professional team of more than 25,000 employees spanning over 30 countries across Europe, DP World is pushing trade further and faster towards a seamless supply chain that's fit for the future.

When DP World started operating in Romania over 20 years ago, the country was still four years away from its membership of the EU. Since then, DP World has witnessed the country's economic transformation and development into

a major European trading hub as it has reaped the rewards of European funding, the single market and frictionless trade.

At every stage, DP World has been an enabler of economic prosperity and growth.

DP World continues to invest in new infrastructure developments in Romania, as well as expanding our operations and footprint across our portfolio of 250 locations in Europe.

## WHAT WE DO IN ROMANIA



### ENHANCING ROMANIAN CONNECTIVITY

DP World operates transport services across sea, rail, truck and river in Romania. DP World has not only made Romania more connected to the outside world but has also made the country itself more interconnected through the development of its logistics infrastructure.



### GROWING LOCAL EMPLOYMENT OPPORTUNITIES

In 2004, DP World Romania started with around 220 employees, and has now grown to over 600. The Constanta terminal began as a leading facility and is now the main container terminal in the Black Sea region, a valuable trade corridor between East and West, through partnership with the Romanian authorities.



### DELIVERING PROSPERITY FOR ROMANIA

Romania was the site of DP World's first investment beyond the Middle East, and its inaugural investment in Europe. The goal is to transform Constanta into Central and Eastern Europe's premiere container and RO-RO hub, connecting East and West.



### €250 MILLION

By 2025, total investments into Romania, including EU grants, by DP World.



### 40%

Of the team have been with DP World throughout its entire time in Romania.



### 600

Employees in Romania.



Reduced carbon emissions by 55% using mainly barges instead of trucks to transfer containers from Balta Mare a Braila (80%).



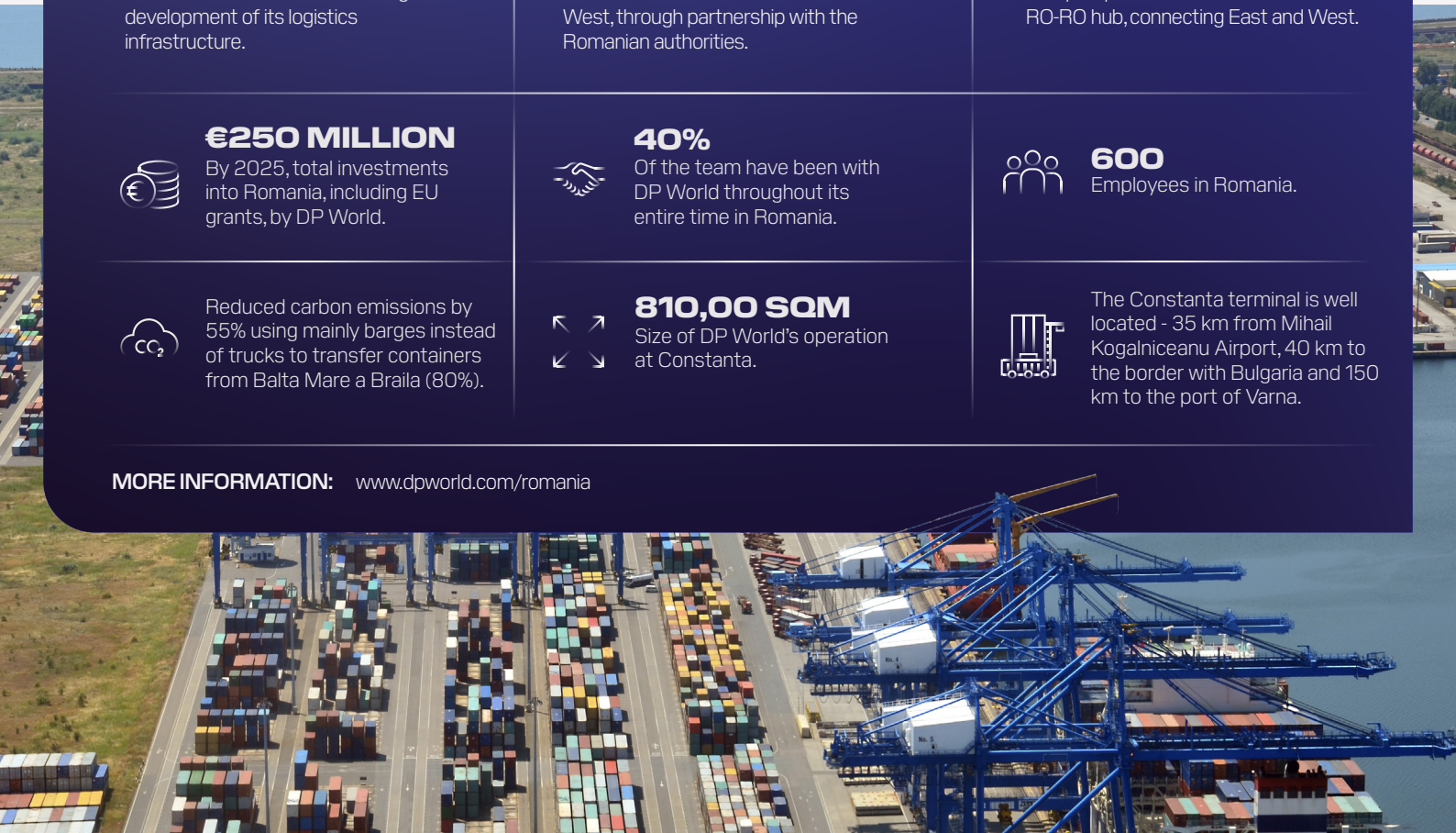
### 810,00 SQM

Size of DP World's operation at Constanta.



The Constanta terminal is well located - 35 km from Mihail Kogalniceanu Airport, 40 km to the border with Bulgaria and 150 km to the port of Varna.

MORE INFORMATION: [www.dpworld.com/romania](http://www.dpworld.com/romania)



# DPW WORLD EUROPE

## WHO WE ARE

With over 25,000 employees in over 30 countries across Europe, we are rapidly transforming to become a leading integrated supply chain provider.

Through our far-reaching integrated European network of deep sea and inland terminals, warehousing and transport solutions, DP World Europe helps trade flow across the continent and the globe.

## WHAT WE DO

We provide customers with the efficient, streamlined, sustainable and resilient supply chain solutions they need to overcome challenges and build trade relations across the world.

## EUROPE IN NUMBERS



### +250 LOCATIONS

Span across operations in +30 countries



### FREIGHT FORWARDING

Capabilities across Europe



### OVER 25,000

Colleagues across Europe



### 14 INLAND TERMINALS

In 6 countries



### 10 DEEP SEA TERMINALS

In 9 countries



### 90 LOCATIONS

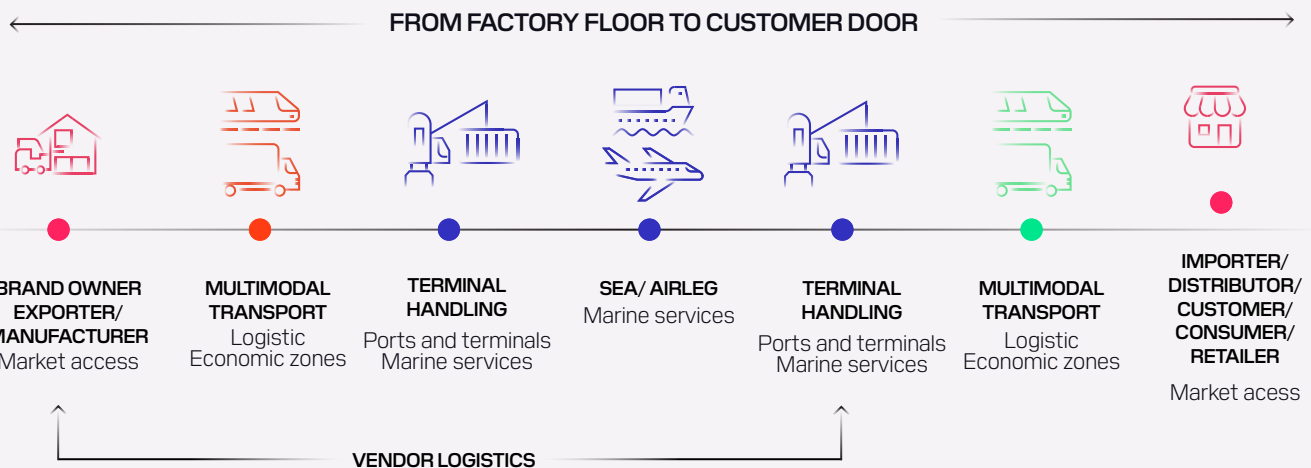
Connected through our feeder and shortsea network



### 150 WAREHOUSES

Across our logistic business

## OUR PRESENCE ACROSS THE SUPPLY CHAIN



## TECHNOLOGY-LED SOLUTIONS TO REDUCE INEFFICIENCIES ACROSS THE SUPPLY CHAIN

Visibility and transparency, automated planning, digital rates, instant access and control, trade finance and insurance, enterprise IT solutions, and systems plus B2B eCommerce.