



DP WORLD

DP WORLD LUANDA IN A SNAPSHOT



-2 to 5 days Transit time

Schedule reliability, 95% of all vessels berthing on arrival. No berthing delays since takeover 2021



1 Location

Largest stacking capacity in Angola, no external ICD



Cost Savings

No additional charges of \$500/TEU for transfer to external ICD



Export

Only terminal with on-site scanner, 6 RS equipped with VGM, Dedicated Export Gate Lane



Landside

On-site stuffing / unstuffing and storage. Open to discuss end-to-end solutions; Road, Cross-border

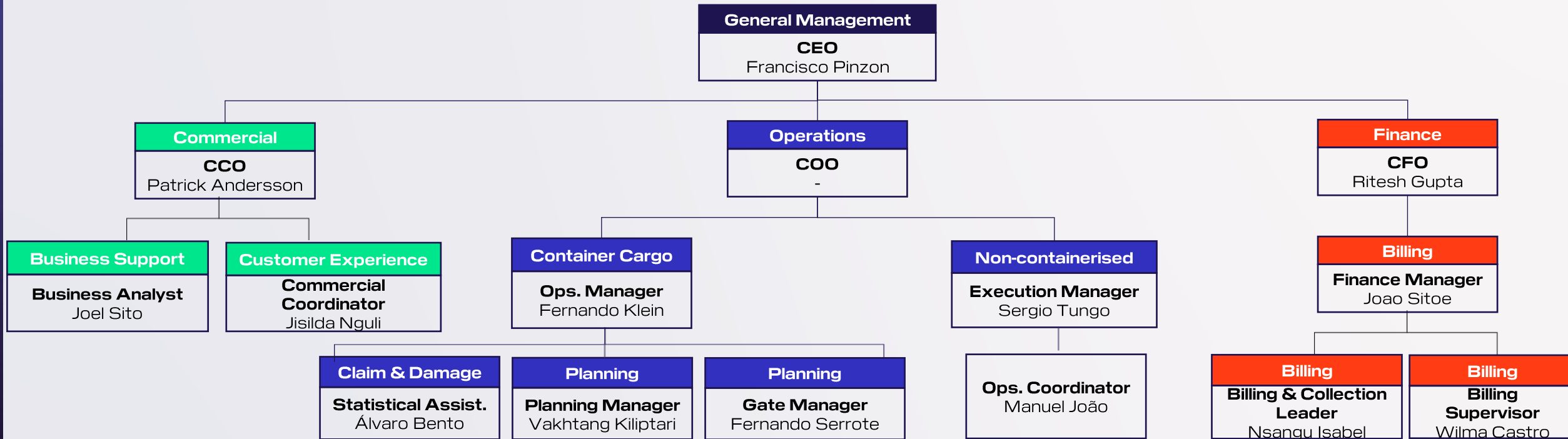


Reefer plugs

580 reefer plugs installed capacity,

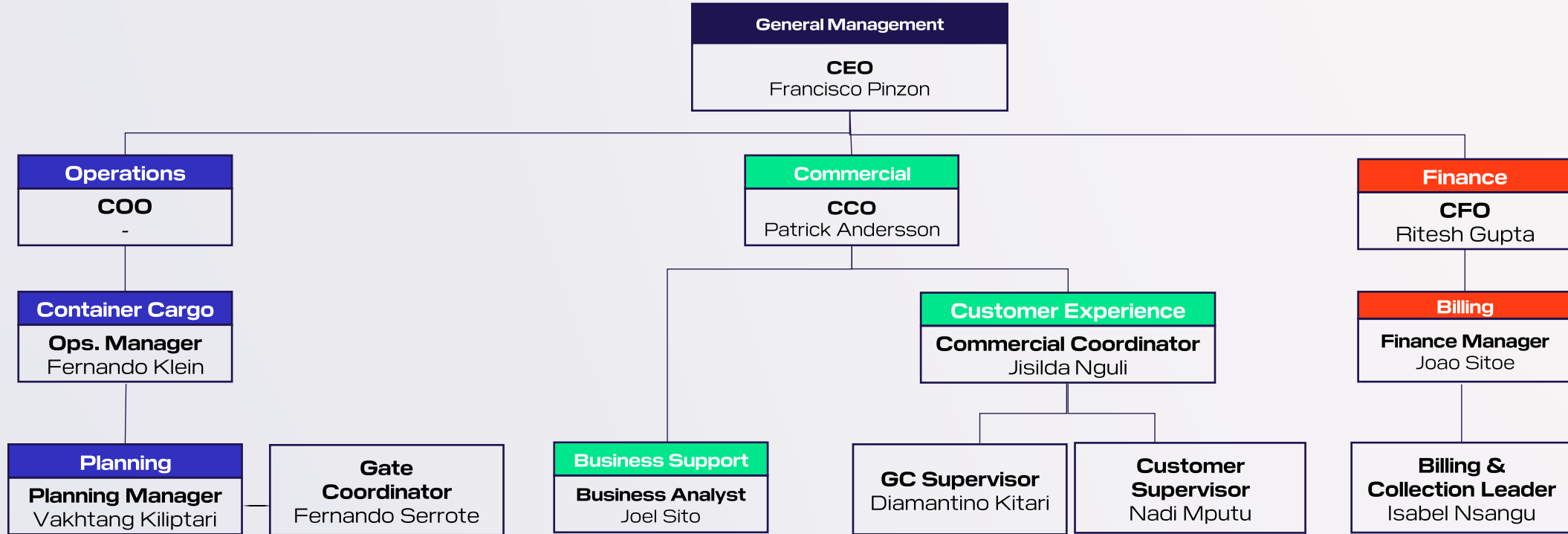


COMMUNICATION MATRIX - SEASIDE



Area	Head of Area	Key Contact	E-mail	Contact Number
Berthing Plan	Vakhtang Kiliptari	-	dpwluanda.berthingplan@dpworld.com	+244 923 165 270
Vessel Planning	Vakhtang Kiliptari	Vakhtang Kiliptari	dpwluanda.vesselplanning@dpworld.com	+244 923 165 270
Gate	Fernando Serrote	Kudimuena Isabel	dpwluanda.gate@dpworld.com	+244 923 165 270
Yard	Vakhtang Kiliptari	Vakhtang Kiliptari	dpwluanda.yardplanning@dpworld.com	+244 923 165 270
Non-containerised Cargo (GC & RoRo)	Sergio Tungo	Manuel João	dpwluanda.generalcargo@dpworld.com	+244 923 165 270
Export	Vakhtang Kiliptari	Esperança Feijó	dpwluanda.export@dpworld.com	+244 923 165 270
Vessel Claim / Damage	Fernando Klein	Alvaro Bento	dpwluanda.claims@dpworld.com	+244 923 165 270
Commercial Inquiries (Tariff, SSR)	Patrick Andersson	Jisilda Nguli	dpwluanda.commercial@dpworld.com	+244 923 165 270
Vessel Billing	Ritesh Gupta	João Siteo	dpwluanda.vesselbilling@dpworld.com	+244 923 165 270

COMMUNICATION MATRIX - LANDSIDE



Area	Head of Area	Key Contact	E-mail	Contact Number
Commercial Inquiries -Discounts -Block Stacking -Berthing Plan -Export -Roro & GC	Jisilda Nguli	Nadi Mputu Diamantino Kitari Joel Sito	dpwluanda.commercial@dpworld.com	+244 923 165 270
Gate	Fernando Serrote	Kudimuena Isabel	dpwluanda.gate@dpworld.com	+244 923 165 270
Claims (Billing, Cargo damage)	Nadi Mputu	Nsingi Aristote	dpwluanda.claims@dpworld.com	+244 923 165 270
Proforma Request	João Siteo	Isabel Nsangu	dpwluanda.proforma@dpworld.com	+244 923 165 270
Final Invoice	João Siteo	Isabel Nsangu	dpwluanda.factura@dpworld.com	+244 923 165 270
Emergência	Décio Simão	Nídia Lacerda	dpworldluanda.postomedico@dpworld.com	+244 935 175 097
Security	Isaac Pereira	Horácio Chitundo Anacleto Romano João Bandua Leonardo Zunga	dpworldluanda.security@dpworld.com	+244 933 152 965