

In case of emergency / fire

Call security at T. +32 3 730 49 49. They will contact the emergency services.

In case of NBC-alarm

In case of a nuclear, biological or chemical alarm, report to the nearest building or vehicle. Close windows and doors and turn off ventilation and air conditioning. Await further instructions

In case of accidents

Within the Port of Antwerp, there is central medical assistance via S.I.W.H.A.
T. +32 3 541 00 23

In case of evacuation

Report to the nearest emergency assembly point.



Entrances: see on the map

Entering the terminal with a vehicle is only allowed after permission and under supervision. Please always follow the indicated traffic instructions.



Security and transport service

T. +32 (0)3 730 49 49



Respect the environment!

Use the provided litter bins and keep the terminal clean.



Restricted area

Port facility under regulation EC n°725/2004 on enhancing ship and port facility security.



Disclaimer:

Entrance is at own risk. The AG-terminal will not accept responsibility for any loss, damage or harm at persons, property and means of transport while you are within the area of the terminal.

All terminals have 24/7 camera surveillance.

DP World Antwerp processes any personal data according to the framework of the General Data Protection Regulation (GDPR). You can consult our policy on www.dpworldantwerp.com > contact > privacy



DP WORLD
Antwerp

Port No. 1910-1950 - Quay No. 1700-1719
www.dpworldantwerp.com

Responsible publisher: DP World Antwerp.
Please do not throw on public roads.



VISITOR'S GUIDE

Creating Safety, **Now.**

SAFETY RULES

In general

Everyone on our terminal, including visitors, suppliers and contractors are obligated to follow the Safety and Security rules.



Pedestrians and (motorized) bicycles are prohibited on the terminal.



Always use a flashing light or the four direction indicators.



Never walk or drive underneath a suspended load.



Seat belt use is mandatory.



Stay away from operational traffic.



It is prohibited to take pictures or film.



The speed limit is 30 km/h..



Smoking is prohibited in all buildings on the terminal.



Overtaking prohibition.



Passengers not allowed.



Use of mobile phones while driving is prohibited.



Alcohol and drugs are prohibited!

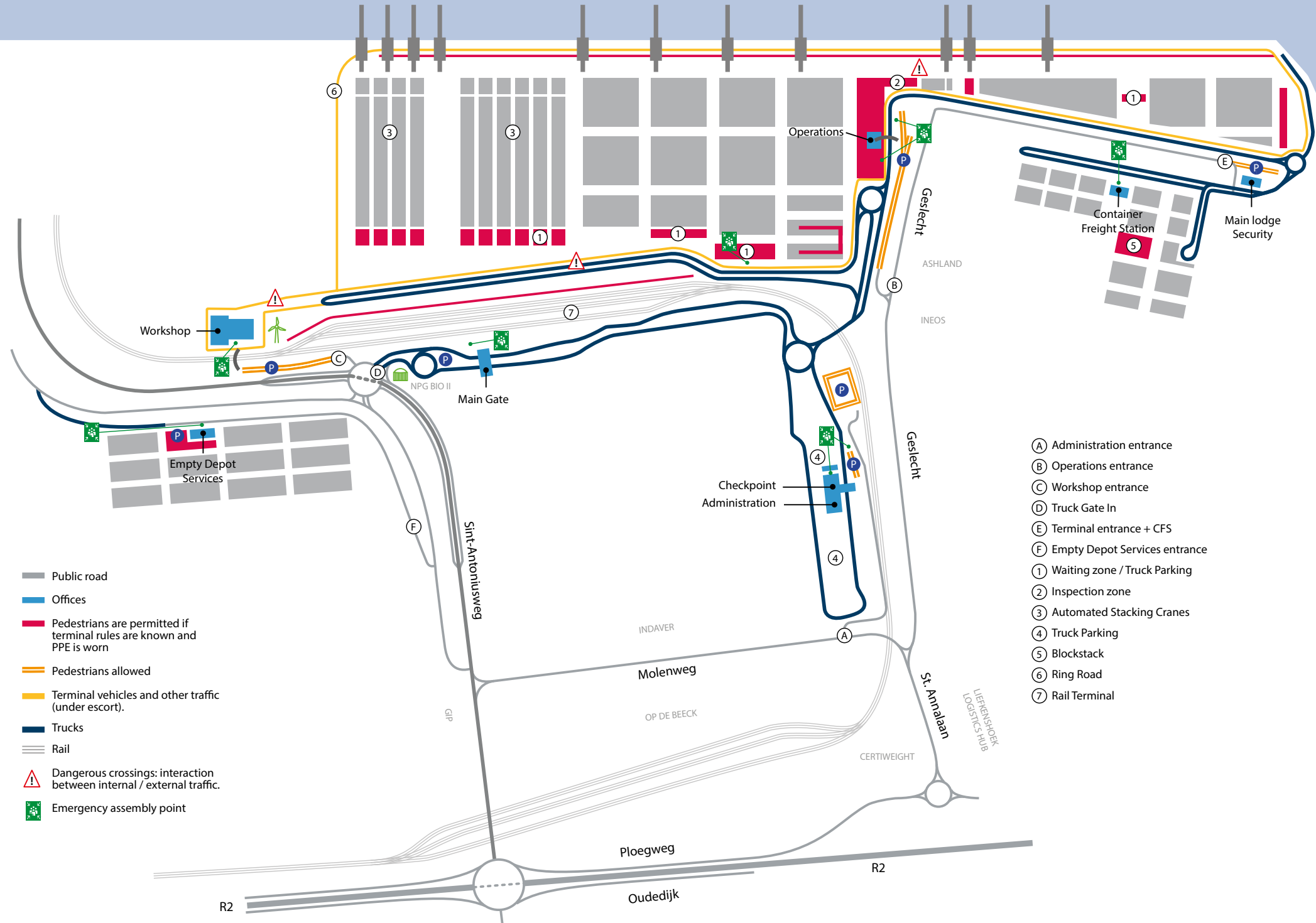
Entering the terminal

Personal protective equipment is obligated when entering an operational zone.



KIJDRECHTSLUIS

DEURGANCKDOK



- Public road
- Offices
- Pedestrians are permitted if terminal rules are known and PPE is worn
- Pedestrians allowed
- Terminal vehicles and other traffic (under escort).
- Trucks
- Rail
- Dangerous crossings: interaction between internal / external traffic.
- Emergency assembly point

- (A) Administration entrance
- (B) Operations entrance
- (C) Workshop entrance
- (D) Truck Gate In
- (E) Terminal entrance + CFS
- (F) Empty Depot Services entrance
- (1) Waiting zone / Truck Parking
- (2) Inspection zone
- (3) Automated Stacking Cranes
- (4) Truck Parking
- (5) Blockstack
- (6) Ring Road
- (7) Rail Terminal