

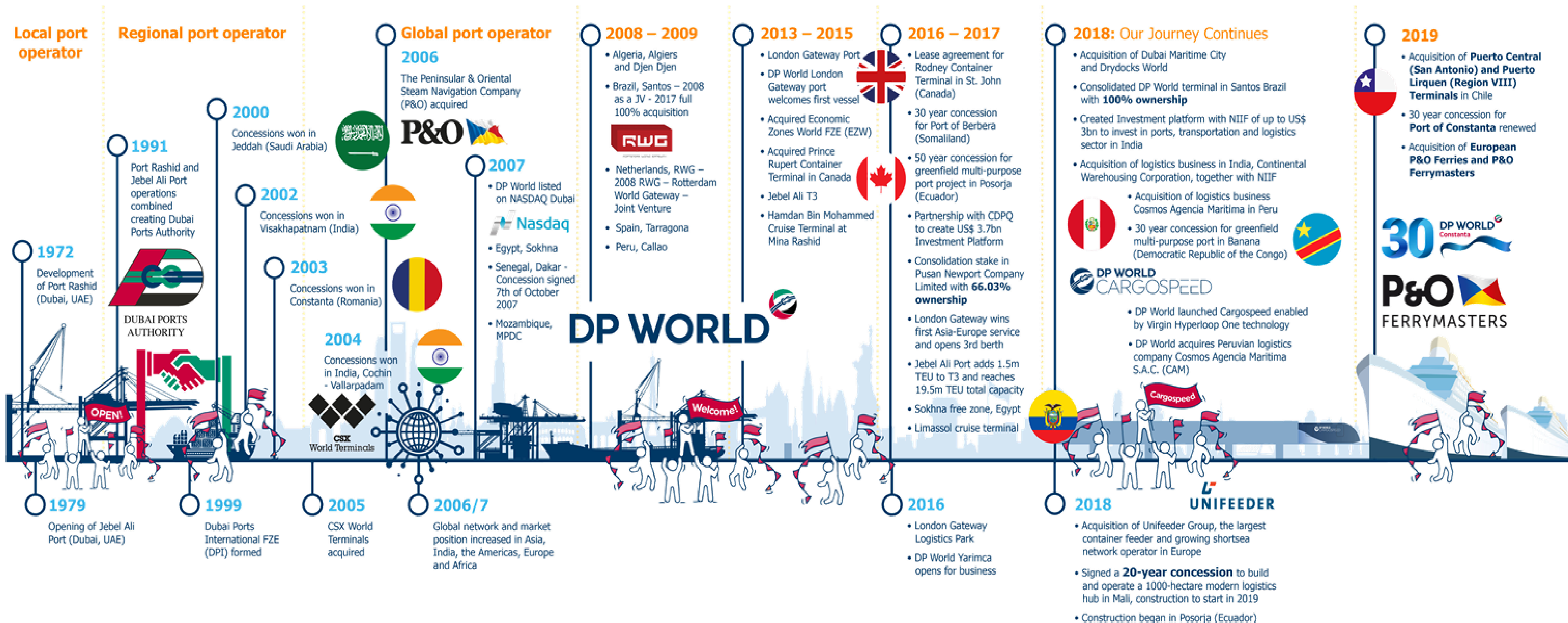
DP World Constanta Terminal Presentation 2020

June 2020



WHO IS DP WORLD

since 1972



OUR REGION

PORTS & TERMINALS

14 terminals in 9 countries

- 9 are deep sea terminals
- 4 are inland terminals
- 1 is a multipurpose terminal

1 Logistics Park

Throughput is +10mil. TEUs

Continued Investment in the terminals

Capacity for growth

Open for new acquisitions



DP WORLD PRODUCT OVERVIEW

We offer more
than just
containers...



OUR VISION

**TO ENABLE SMARTER
TRADE TO MAKE A BETTER
FUTURE FOR EVERYONE**



OUR LEGACY

2004...when it all began



2020...16 years of legacy



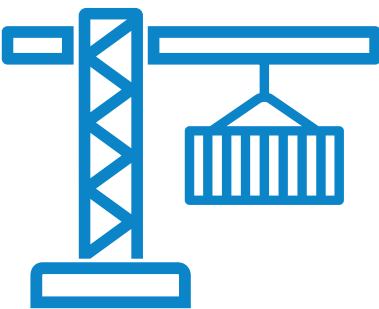
OUR Team

 **453** people

81 ha Total terminal area

27 ha Total future development area

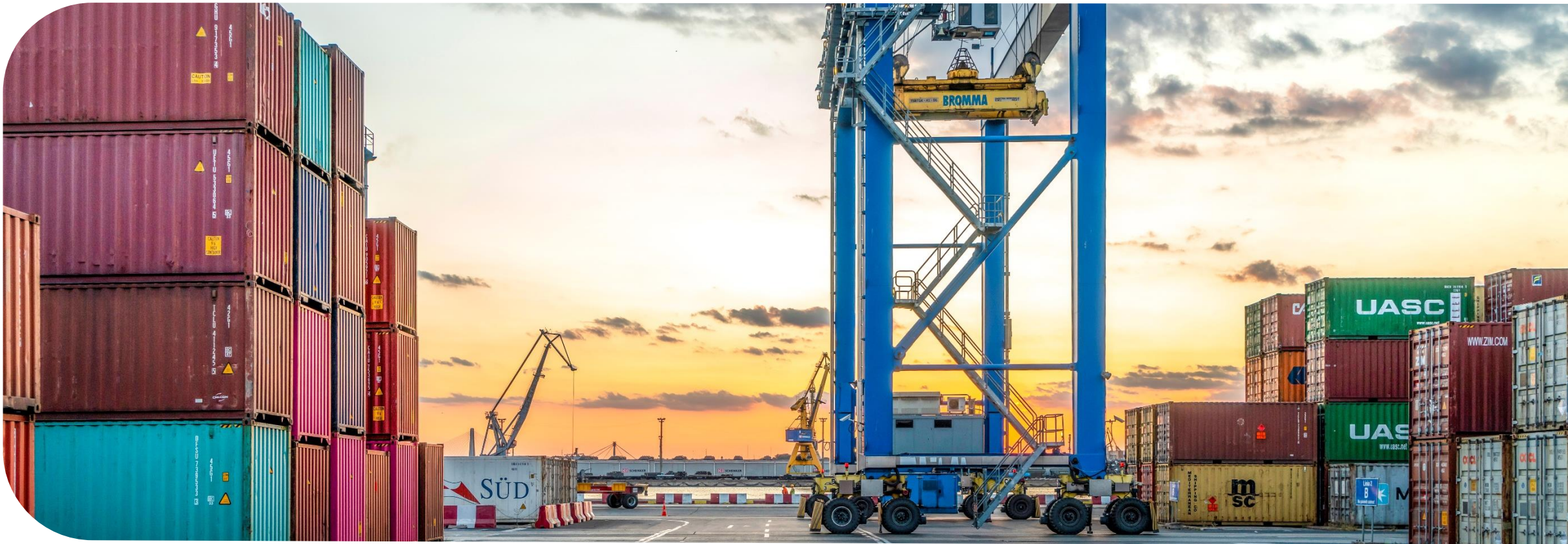
5
cranes



1,000,000
TEU
Terminal capacity

77 Terminal equipment's

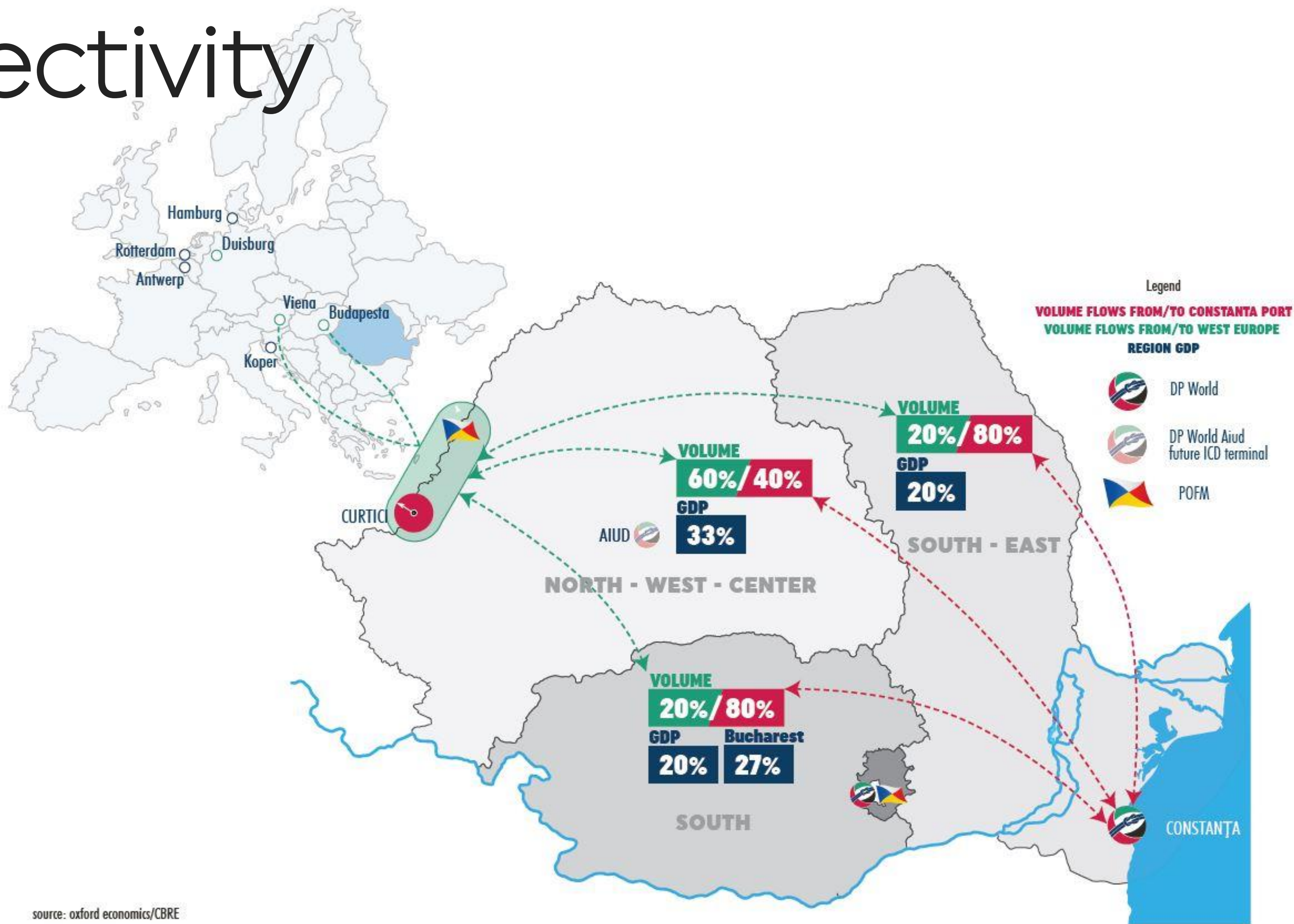
We serve yearly around
500  **150,000** 
100,000 



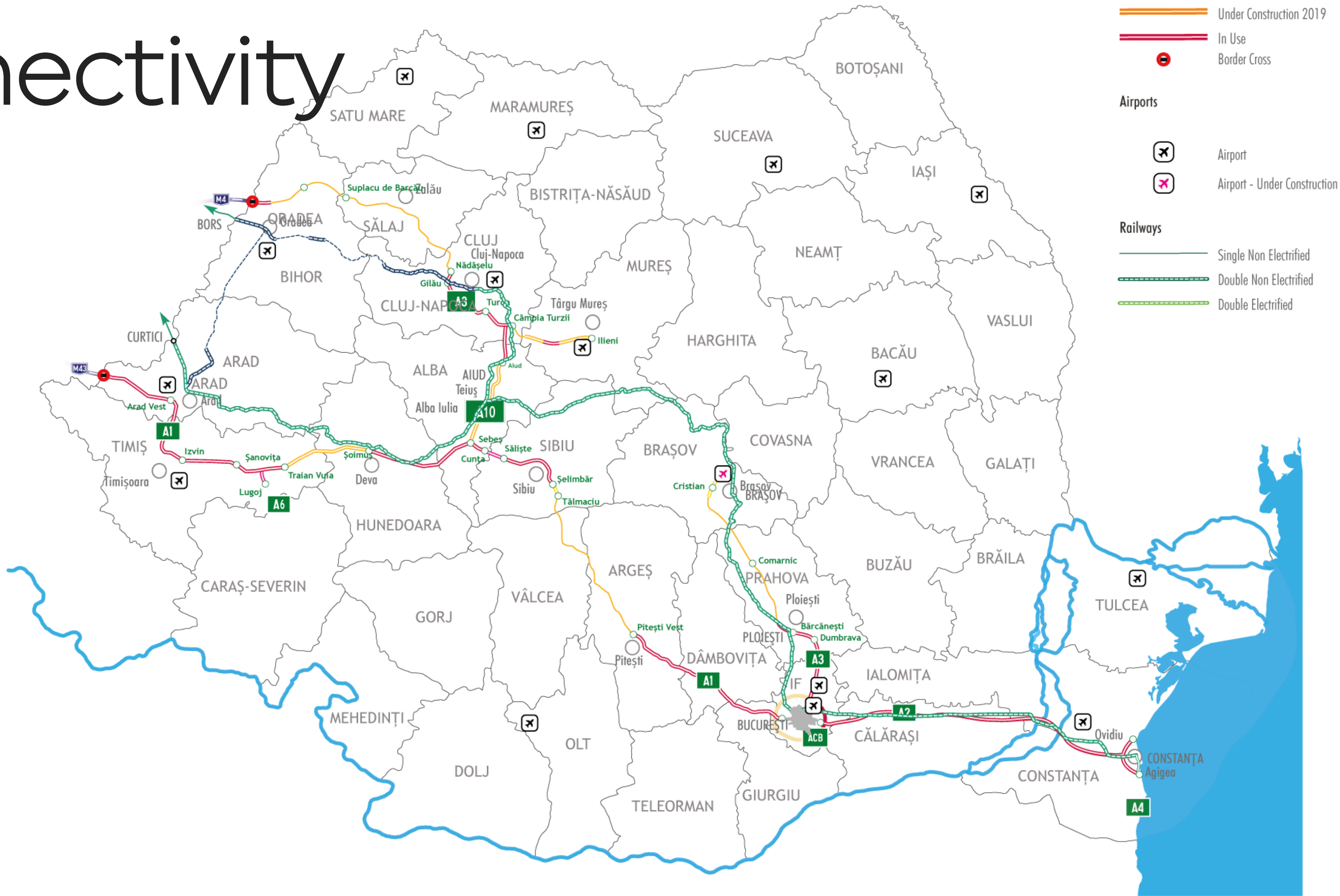
Our deep-sea terminal, ideally located for multi modal connectivity by sea, road and rail, is offering fast and reliable services thus boosting cargo volumes for customers and reducing transit times.



OUR Connectivity



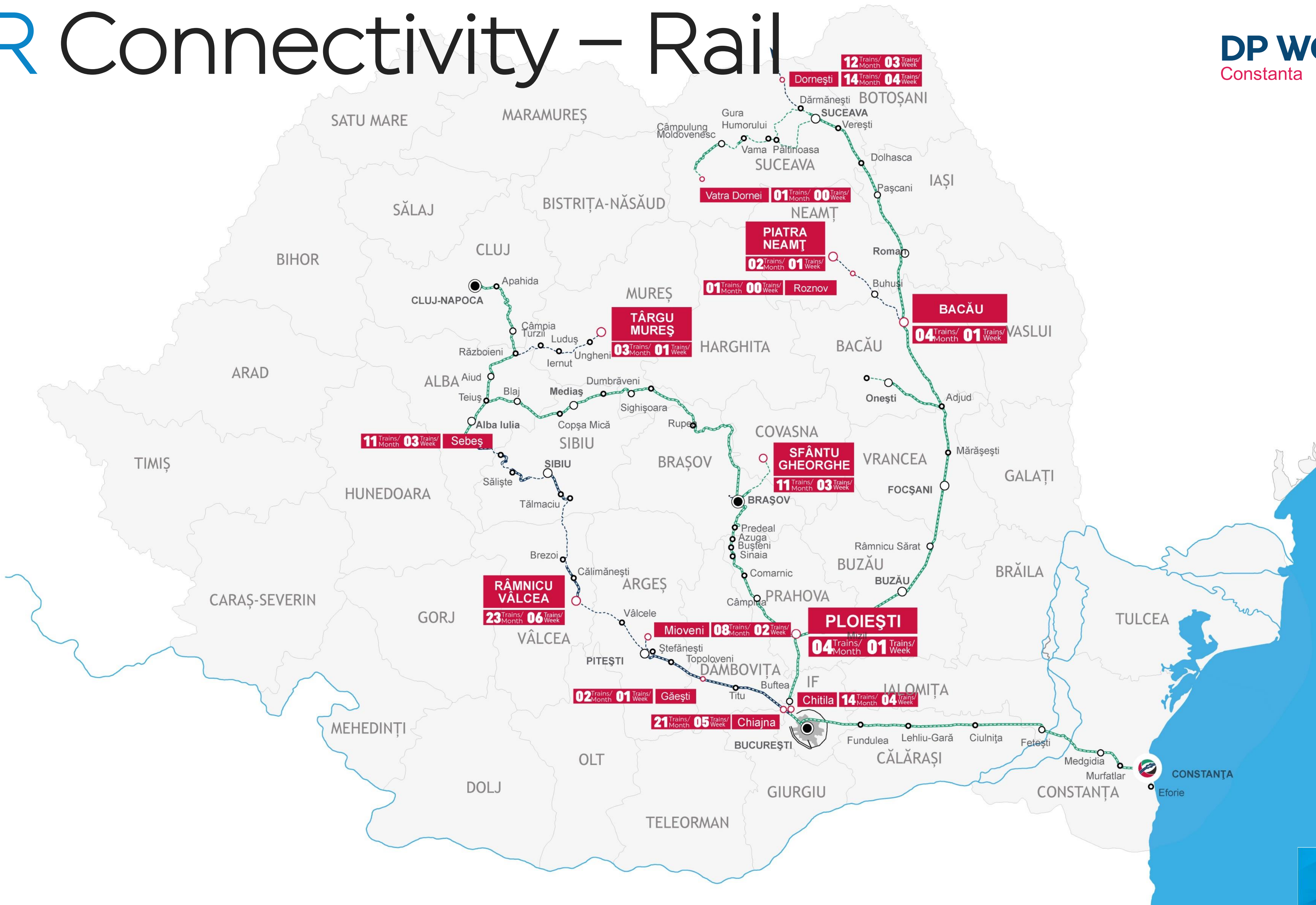
OUR Connectivity



OUR Connectivity



OUR Connectivity – Rail





40 Km to
BULGARIA

FERRY BOAT
RAIL STATION

PORT GATE 14

DANUBE BLACK SEA CANAL

220 Km to
BUCHAREST

A2

A4

PORT GATE 10

PORT GATE 10 bis

NEW LOGISTIC WAREHOUSE

170 Nm to
BOSHPORUS

RO PAX

PROJECT CARGO

DP WORLD
Constanta

- Terminal Borders
- Terminal Area for New Logistic Park
- Area For Terminal Platform Extension
- Rail Coridor
- Road Coridor
- Barge Coridor (Black Sea - Danube Canal)

OUR
LOCATION



40 Km to
BULGARIA

FERRY BOAT
RAIL STATION

PORT GATE 14

DANUBE BLACK SEA CANAL

220 Km to
BUCHAREST

PORT GATE 10

PORT GATE 10 bis

170 Nm to
BOSHPORUS



DP WORLD
Constanta

Rail Coridor

Road Coridor

Barge Coridor (Black Sea - Danube Canal)

OUR
LOCATION

CFS

Container Freight Station

DP World Constanta currently delivers a variety of contract logistics services for 2 PL's & 3 PL's covering all port activities and warehouse related demands.



Warehouse Logistics



Ocean/(Air Freight)



Stripping/Stuffing



Overland Transport



Shipper / Origin

International Logistics Value Chain 'end-to-end'





DP World Constanta
alone handles on average
135 trains/month

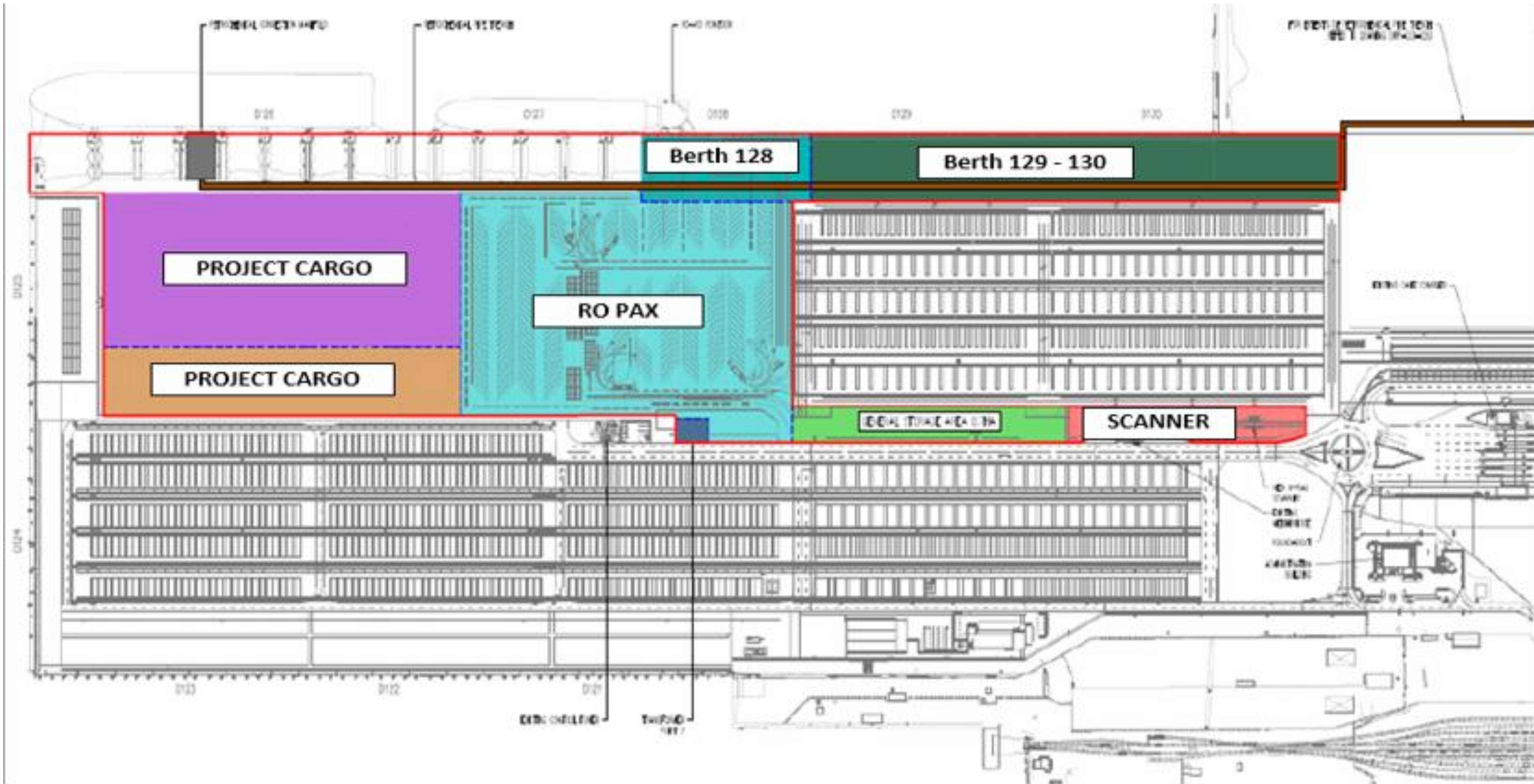
WHERE DO WE GO?





DP WORLD CONSTANTA FUTURE DEVELOPMENT

Development Plan – Terminal Expansion



PROJECT Cargo & RO-RO Operation



ADVANTAGES

- Fully developed ROPAX facility
- Dedicated berth
- Separate gate access
- Integrated solution of loading and unloading of trailers to/from rail wagons
- Direct connectivity with all Black Sea Ports
- Specialized equipment's available for ROR operations

SCANNER PROJECT



ADVANTAGES

- Rapid and effective screening of trucks and trailers with minimum interruption to the movement of goods
- Full automatic scan process and drive through solution up to 60 trucks/hour
- Placed inside of the facility resulting no impact in delivery of goods
- Speedup delivery of goods from the terminal
- Reducing physical inspections of goods

Development Plan

NEW LOGISTIC CENTRE



SITE ADVANTAGES

- Inside the terminal premises;
- Free tax environment due to port free zone;
- Ideally located for import distribution center & export hub;
- Direct access to A2 Highway to Bucharest – 4km;
- Direct connections with national electrified rail infrastructure;
- 35 km from Mihail Kogalniceanu Airport.
- 40 km to Bulgarian border; 150 km to Varna;

The new A class Logistic Centre will provide the appropriate facilities to operate world class warehousing services, therefore significantly contributing to the area development.

DP World Constanta

Cosmin Carstea

Managing Director

Email: Cosmin.Carstea@dpworld.com

