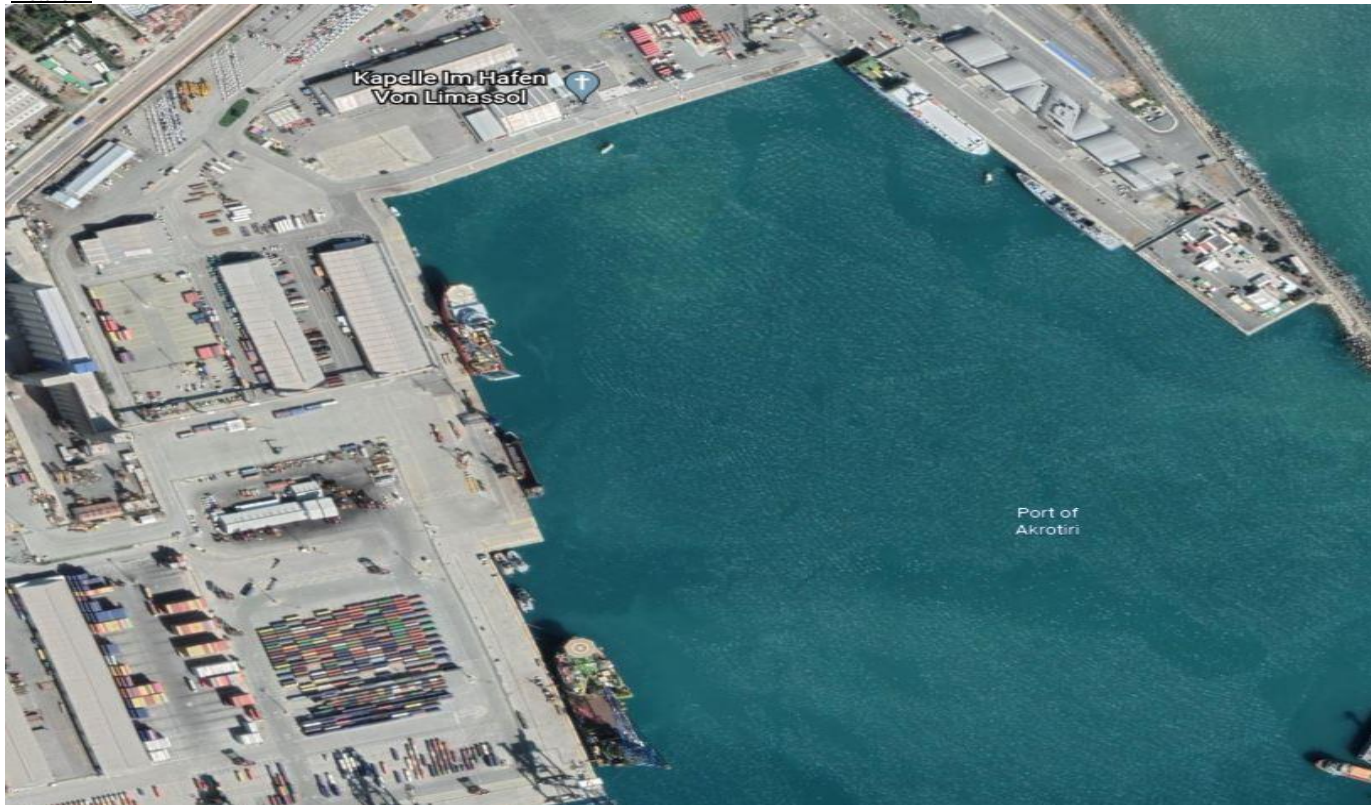


### Port Information - DP World Limassol - Cyprus

1. Location	
Port position (Lat. / Long.)	As per the 'Admiralty 849' Ports in Western Cyprus
Terminal Name:	DP WORLD Limassol
Terminal UN Location code	CY LMS
2. Channel	
Minimum depth	17.0m
Restricted air draft	Unlimited
Distance from pilot station to berth	As per the 'Admiralty 849' Ports in Western Cyprus - 1,2 nm
Emergency anchoring position in Channel	Prohibited - Instructions of VTS/Pilot will be followed
3. Berth(Quay)	
Berth name	East Quay, North Quay, West Quay, Cntr/RoRo
Berth Location (Lat. / Long.)	As per the 'Admiralty 849' Ports in Western Cyprus
Minimum depth	11.0m
Restricted draft	10% UKC
Turnung basin position (Lat. / Long.)	As per the 'Admiralty 849' Ports in Western Cyprus
Turnung basin diagram ( Turning circle with drawings)	As per the 'Admiralty 849' Ports in Western Cyprus
Berth length (LOA restriction)	East Quay:480m, North Quay:430m, West Quay:450m, Cntr/RoRO:320m
Berth height from bottom	a) East Quay From: 12m (South Side) To: 12m (North Side) b) North Quay From: 12m (East Side) To: 14m (West Side) c) West Quay From: 14m (North Side) To: 15m ( South Side) d) Cntr/RoRo From: 17m (North Side) To: 17m (South Side)
Berth Apron Width	East: 28m North: 14m West: 17m - 23m North: 27m (12m clearance from EG Fence)
Preferred berthing side	Any
Water density	1026 g/m3
Night navigation	Allowed
Bitt distance (Interval)	Varies, most commonly 20m intervals.
Bitt strength	Bollard pull of 60 tons in any horizontal direction seaward of the cope and in any vertical direction between the horizontal and 30o above it.
Bitt Height	Approx 0.5m
Fender type and picture (Fender Interval)	Yokohama pneumatic fenders, Type I, P50 with Aircraft tire net
Tide table	As per the 'Admiralty 849' Ports in Western Cyprus - max 0.5m
Average water level from bottom	As per the 'Admiralty 849' Ports in Western Cyprus
Stern Ramp seat position condition and picture	a) East/North Quay b) North West Quay c) Cntr/Roro Quay Ramp
Fender diagram	2.5m Dia X 4.0m Long, 2 pcs; 2.5m Dia X 5.5m Long, 2 pcs
All reference pictures of wharf	* reference under the table, Picture 1
Air Draft Limitation	Non
Any other restrictions	
4. Pilot & Tug	
Pilot station position (Lat. / Long.)	As per the 'Admiralty 849' Ports in Western Cyprus
Pilot available time	24hrs/7
Tug boat quantity	3 Tugs
Each boat power (HP or KW)	2 x BP 30 tons + 1 BP 50 tons

5. Pctc calling history	
Vessel name / Length / Arrival draft / Departure draft within 6 months (top to be the latest)	Alexo/ 155 (calling twice a week)
	Akritas/ 155.02 (calling once a week)
	Eddystone/ 193/
	Neptune Thelisis/ 164.4
	Neptune Hellas/168.06
	Grande Europa/183.68
	Grande New York/ 199.9
	Grande Ellade/ 182.08
	Grande Scandinavia/ 182
	Grande Portogallo/ 176.5
	Grande Baltimore/ 200
	Grande Detroit/ 176
	Grande Spagna/ 176
	Grande Bretagne/ 183.68
	Grande Sicilia/ 176.6
	Grande Guinea/ 211
6. Harbor chart	
	* reference under the table, Picture 2
7. Yard Space	
The capacity of yard	24760 sqm yard space for
8. Operation	
Working days and time	24/7.
VHF	CH 09 for Limassol Pilots; CH 10 for VTS/Port Control
Stevedores (Shifting time)	a) Shift 1 07:30 -16:30 b) Shift 2 16:30 - 24:00 c) Shift 3 00:00 - 07:30
Fork Lift avail & capa	2.5T - 37T
Garbage disposal (Compulsory / optional)	Can be arranged throught CPA (can be arrangeddirectly throught agent).
Bunkering (Truck / Barge, Anchorage / Alongside)	Available both from sea via a barge and on shore sides by a truck (can be arranged directly throught vessel agent).
Fresh water (Truck / Barge, Anchorage / Alongside)	Available Alongside (can be arranged directly throught agent).

Picture 1:



Picture 2:

