



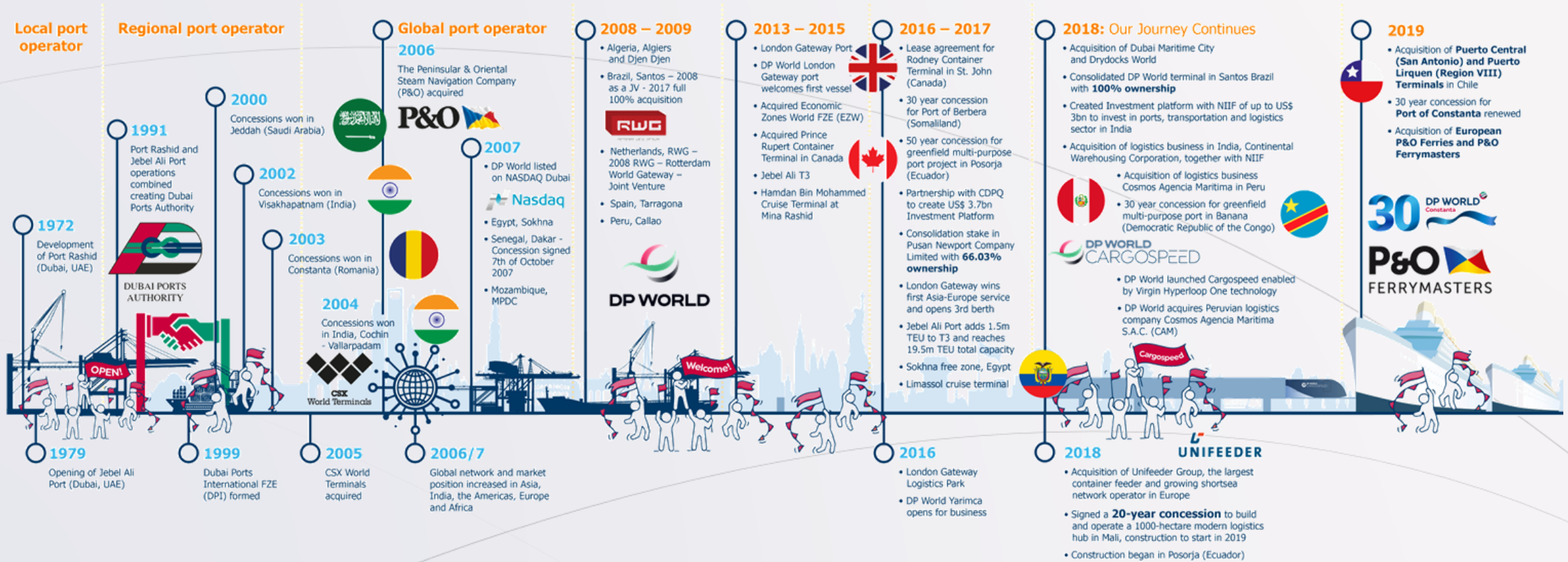
# TERMINAL PRESENTATION

DP World **Constanta** 2021



# WHO IS DP WORLD

Subtitle goes here



# PORTS & TERMINALS

## OUR REGION

### 16 terminals in 11 countries

- 10 are deep sea terminals
- 5 are inland terminals
- 1 is a multipurpose terminal

### 1 Logistics Park

Throughput is +10mil. TEUs

Continued Investment in the terminals

Capacity for growth

Open for new acquisitions



# DP WORLD IN NUMBERS

2021



**56,157**  people

 **51** countries



DP World is a leading enabler of global trade and an integral part of the supply-chain. We operate multiple yet related businesses – from marine and inland terminals, maritime services, logistics and ancillary services to technology-driven trade solutions.

 **1,600** cranes

 **127** marine and inland terminals

DP World is one of the largest marine terminal operators in the world by throughput



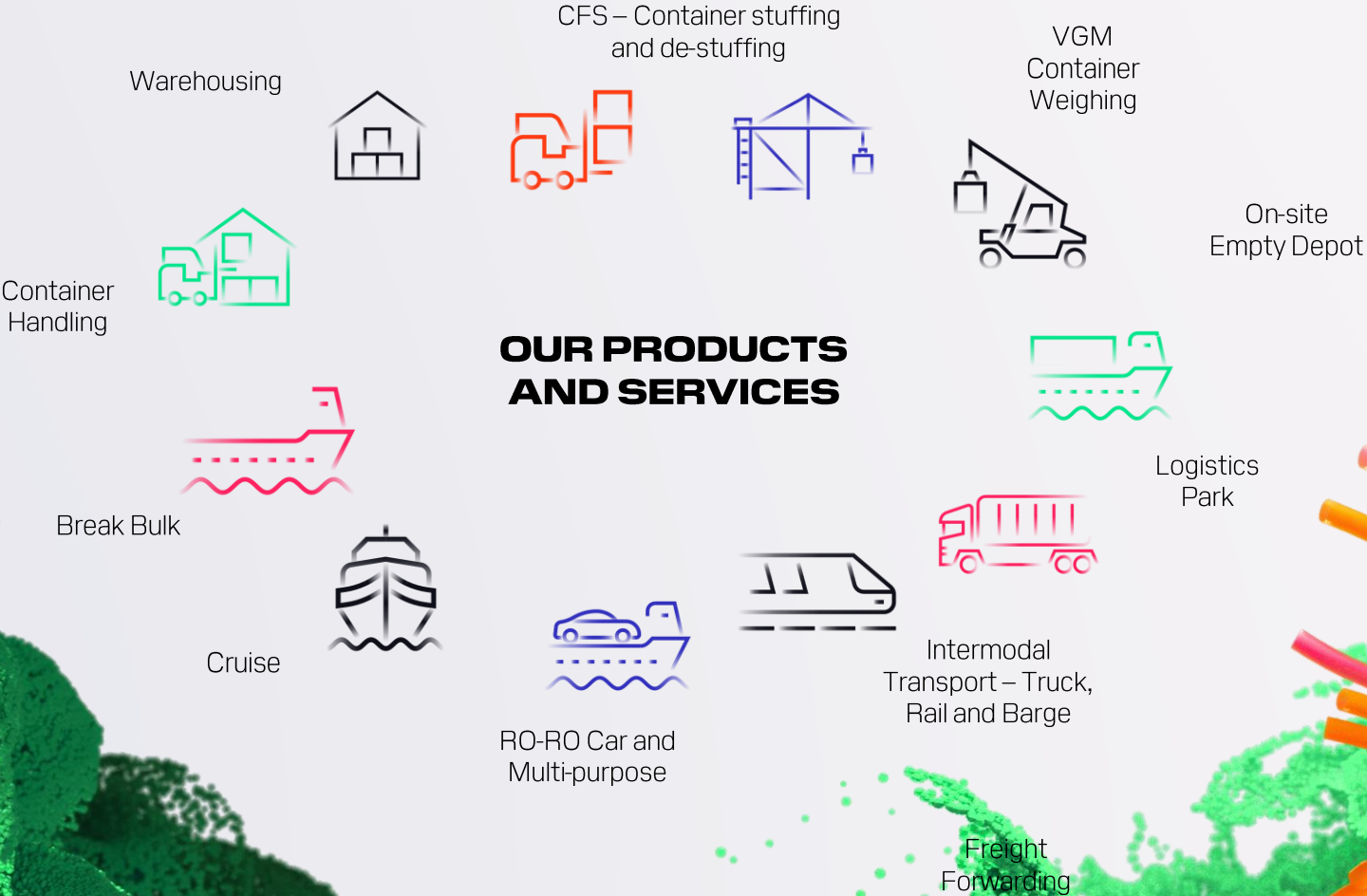
we serve around **66,000** vessels / year





# DP WORLD PRODUCT OVERVIEW

We offer more than just containers...



# OUR VISION

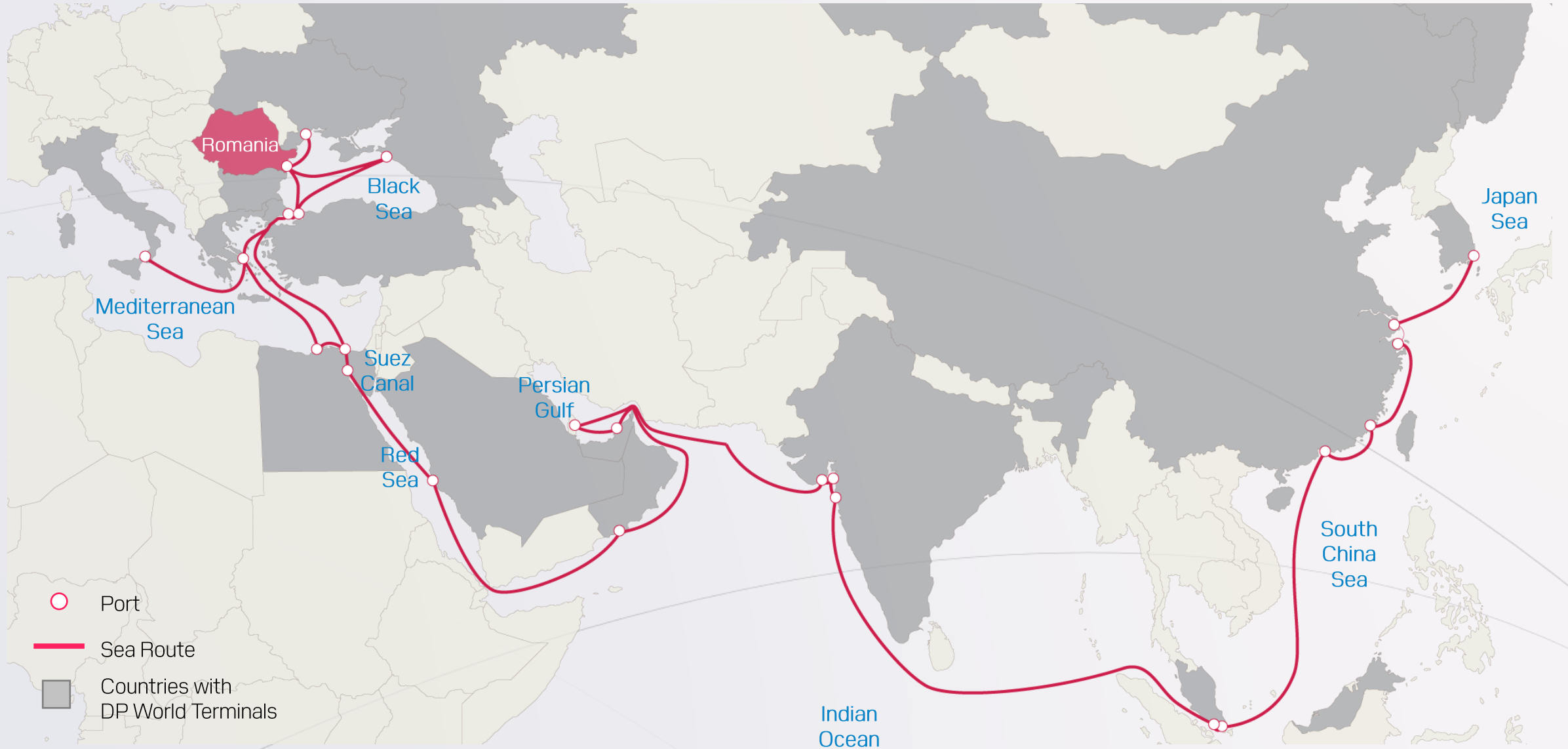
“

TO ENABLE SMARTER  
TRADE TO MAKE A BETTER  
FUTURE FOR EVERYONE

”



# OUR SEA CONNECTIVITY



# WHY DP WORLD CONSTANTA

## Strategic location

Situated on the west coast of the Black sea at cca 170 nautical miles NW of Bosphorus Straits, the terminal offers direct link to the Danube-Black Sea Canal being connected into the heartland of Eastern and Central Europe;

## Unrivalled nautical infrastructure

The terminal location in the south part of Constanta port offers easy and quick access to all vessels maneuvering towards terminal berths; DPW Constanta operates berths that enjoys highest water depths in the port, ranging from -13.5 to -17 m thus accommodating large container vessels that transit to Bosphorus Straits towards the Black sea.



## Romania gateway for containers

DPW Constanta is the main gateway for containerized cargo flows for Romania market covering all major Romanian regions for both imports and exports as container vessel services link the port with the major commodities trades





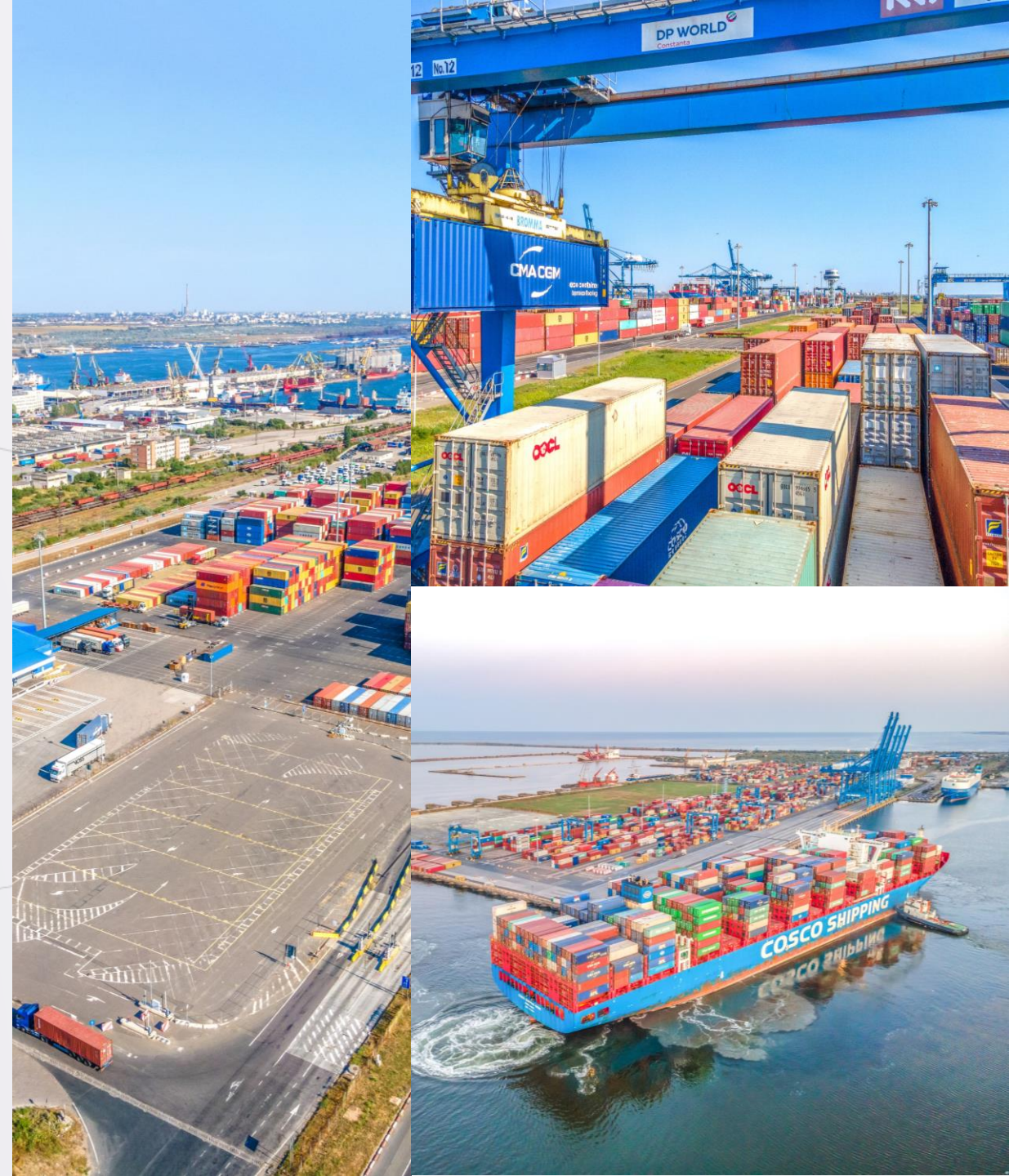
# THIS IS THE SPACE FOR THE TITLE

## Best container port infrastructure in Romania and the Black Sea

Benefitting from state of art infrastructure and a dedicated team of professionals to cater for various customer' needs DPW Constanta has embarked on the road of digital transformation to take the port ahead

## Innovative and pushing boundaries – DPW Constanta

With a constant care for processes improvement and a strong drive to embrace change, DPW Constanta is your trade enabler partner that will spare no efforts in pushing the boundaries and bringing innovation in all operational areas.

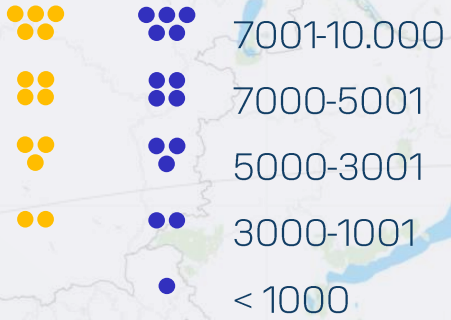




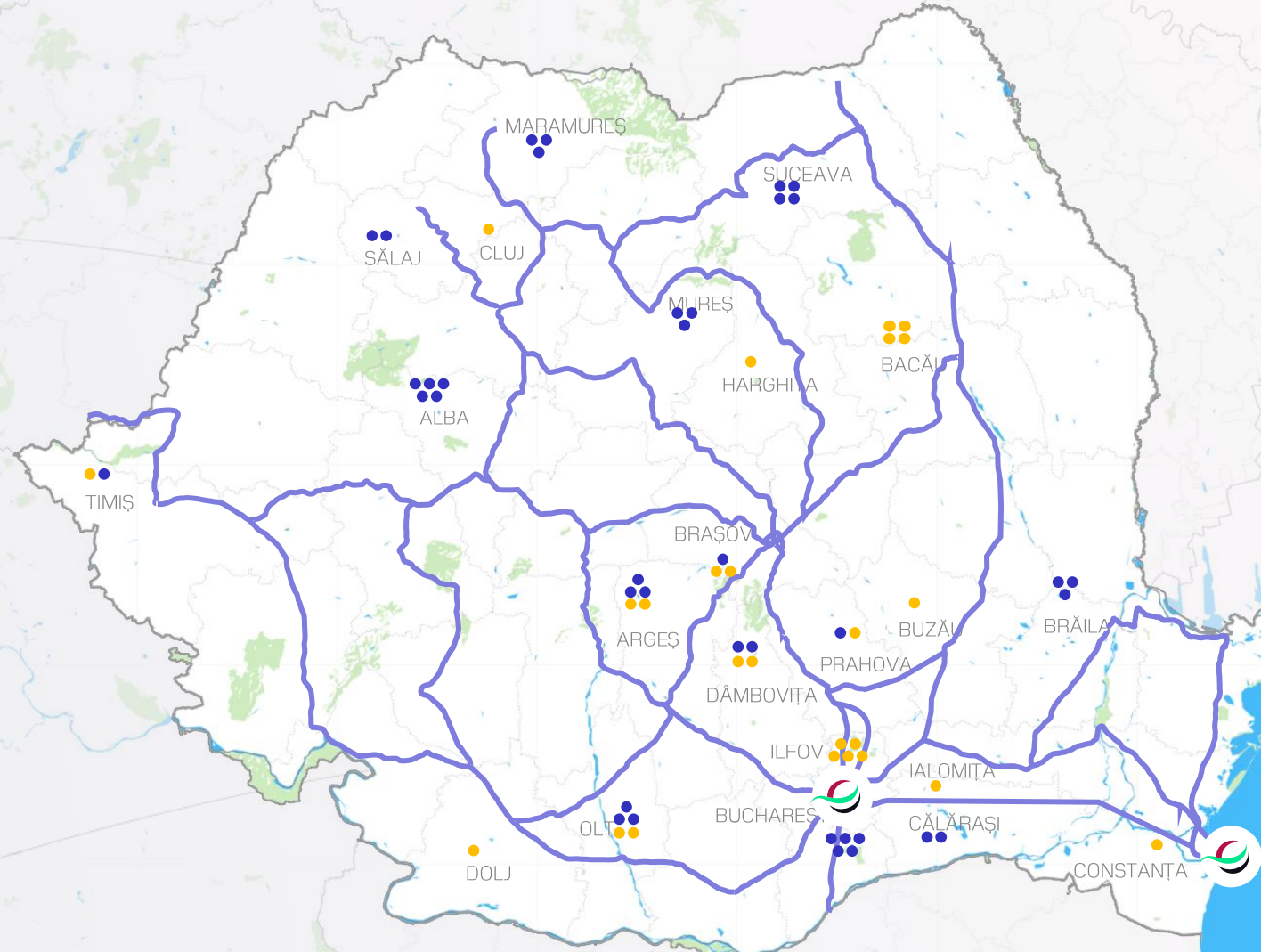
# OUR ROAD CONNECTIVITY

## CONTAINER VOLUMES

Import Export



DP World Location





# OUR RAIL CONNECTIVITY

## RAIL CONTAINER VOLUMES

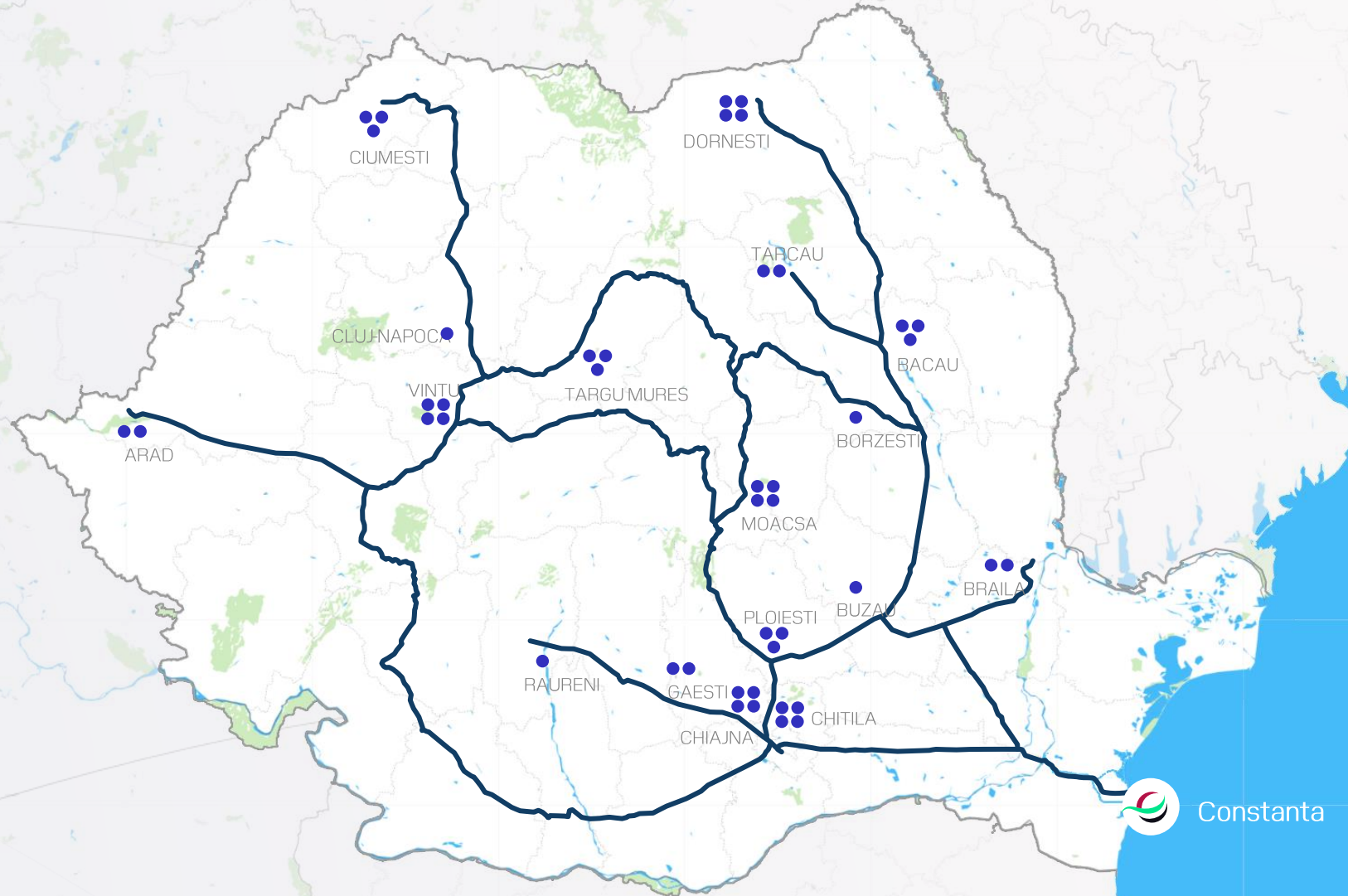
••• 10,000-30,000

•• 1000-10,000

•• 100-1000

• <100

 DP World Location



 Constanta

Czech Republic

# DANUBE BARGE CONNECTIVITY

Ukraine

Slovakia

Austria

Moldova

Hungary

Slovenia

Romania

Croatia

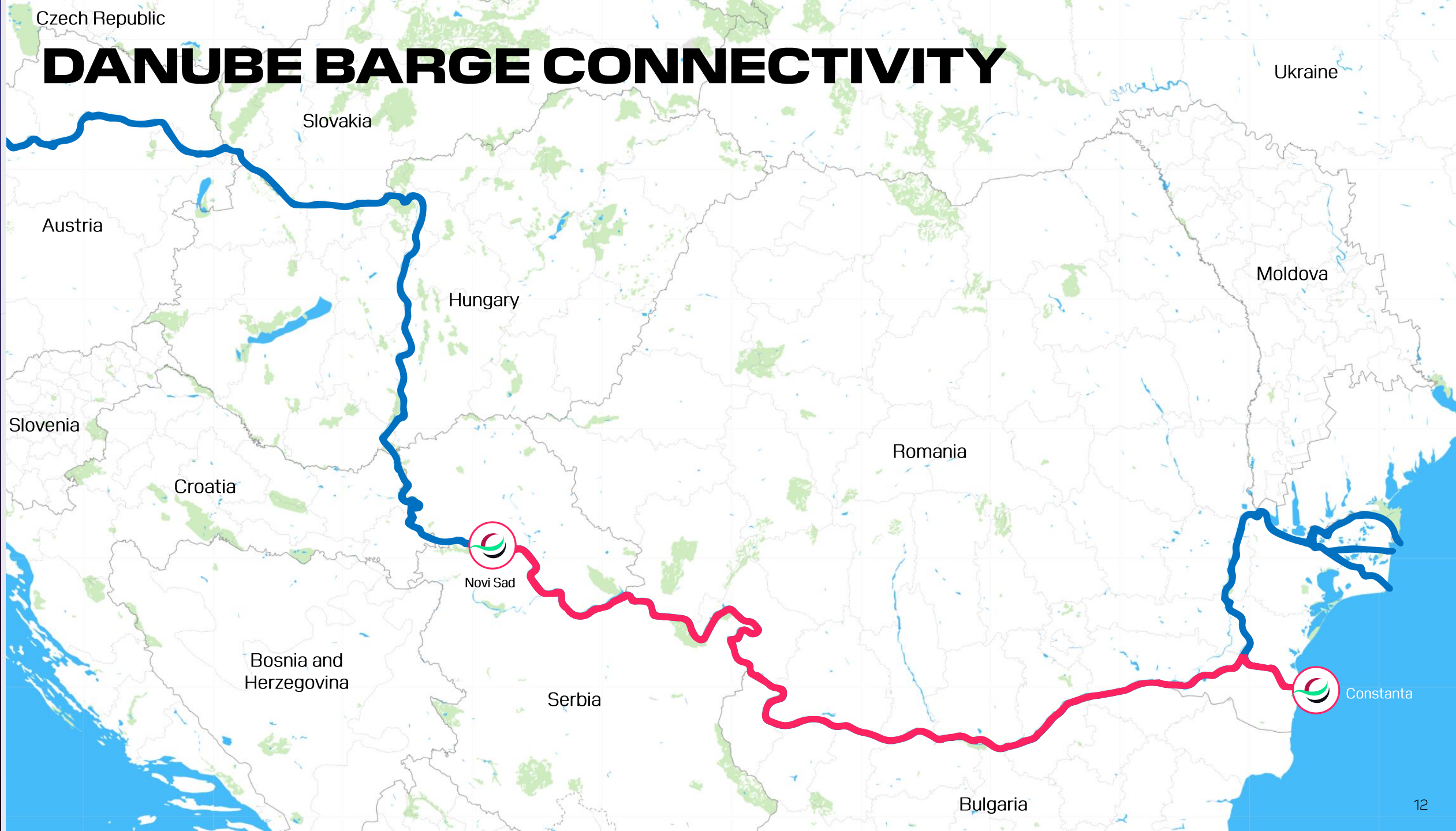
Novi Sad

Bosnia and Herzegovina

Serbia

Constanta

Bulgaria





# VESSEL SERVICES



## MAIN LINER SERVICES:

BEX

Asia-Med Service ( Bosphorus Express )

## Vessel Operator

COSCO / CMA CGM

## FEEDER SERVICES:

L76

Europe & Med feeder service

SEALAND

LINE B

Adriatic & Eastern Med feeder service

MSC

BSTEM

Egypt-Black Sea-Greece feeder service

MSC

IM2

Intra MED feeder service

COSCO

IBX

Intra Black Sea Express feeder service

YML

TBX

Israel Turkey Black Sea Express

ZIM

BSX

Black Sea Express feeder service

EMES / EVG

WBS

West Med Black Sea Services

ARC / HLL

## BARGE SERVICE:

IHO

Constanta - Budapest barge service

Ihorks

IMB

Constanta – Insula Mare a Brailei barge service

Ihorks





# DP WORLD CONSTANTIA HANDLES ON AVERAGE 135 TRAINS /MONTH





# OUR LOCATION



Inside Free Port with direct access to:

- Electrified national rail network (—)
- Highway A4/A2 (—)
- Black Sea Danube Channel (—)
- MK International Airport
- North: 35 km to MK Int'l Airport
- East: 150 Nm to Bosphorus Strait
- South: 40km to Bulgaria / 150 km to Varna
- West: 220km to Bucharest

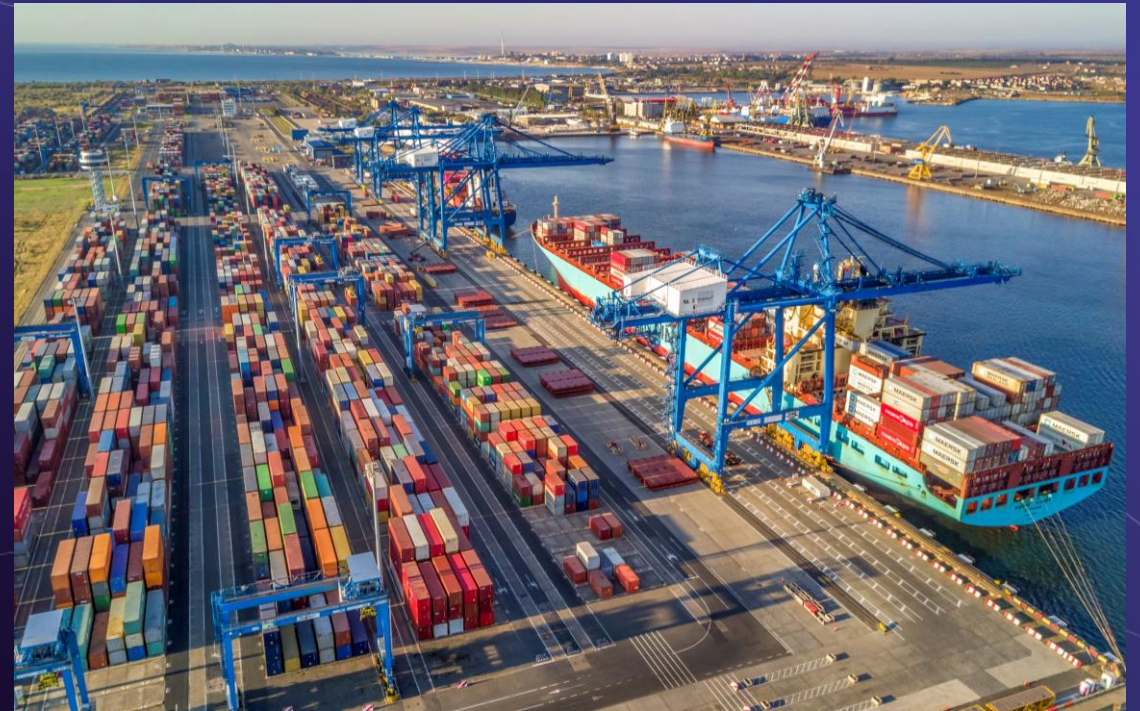


# PAST AND PRESENT OVERVIEW

2004...when it all began



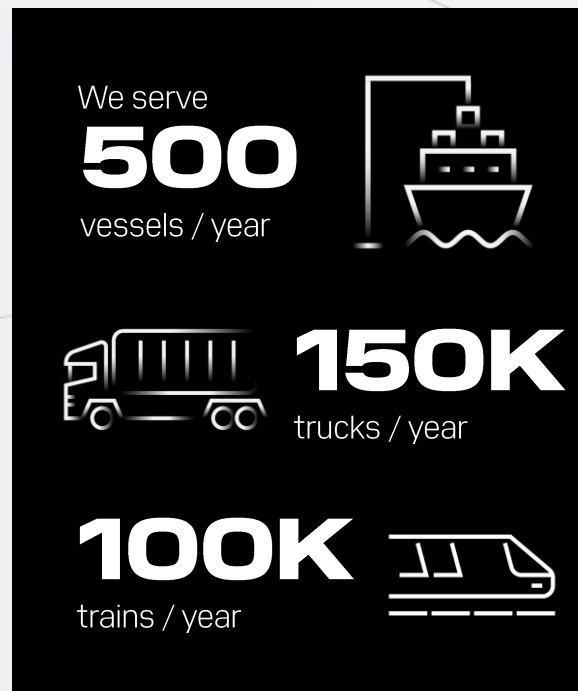
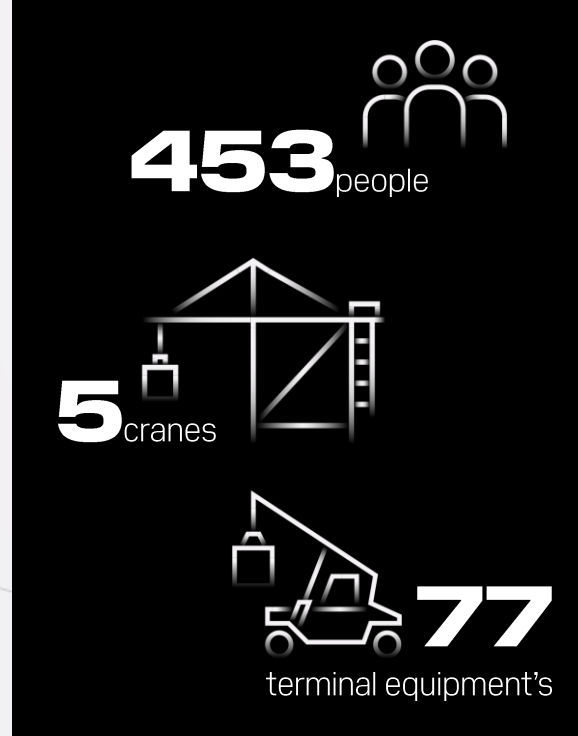
2021...17 years later





# OUR TEAM AND RESOURCES

2021



State-of-the-art facility with excellent deep-draft access

Multi modal connectivity by sea, road and rail

Fast, reliable and high-quality services

Added value for customers and stakeholders

Free tax environment due to port free zone

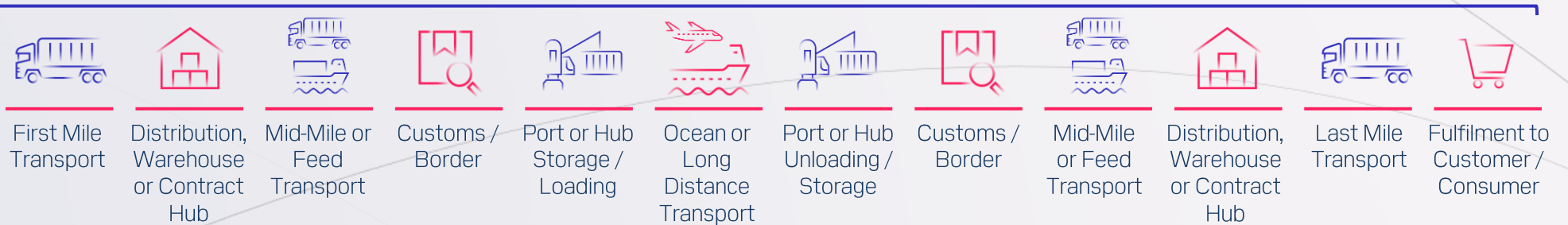
# CFS - CONTAINER FREIGHT STATION

DP World Constanta currently delivers a variety of contract logistics services for 2 PL's & 3 PL's covering all port activities and warehouse related demands.



Shipper / Origin

International Logistics Value Chain 'end-to-end'





# WHERE DO WE GO?





# OUR DEVELOPMENT PROJECTS



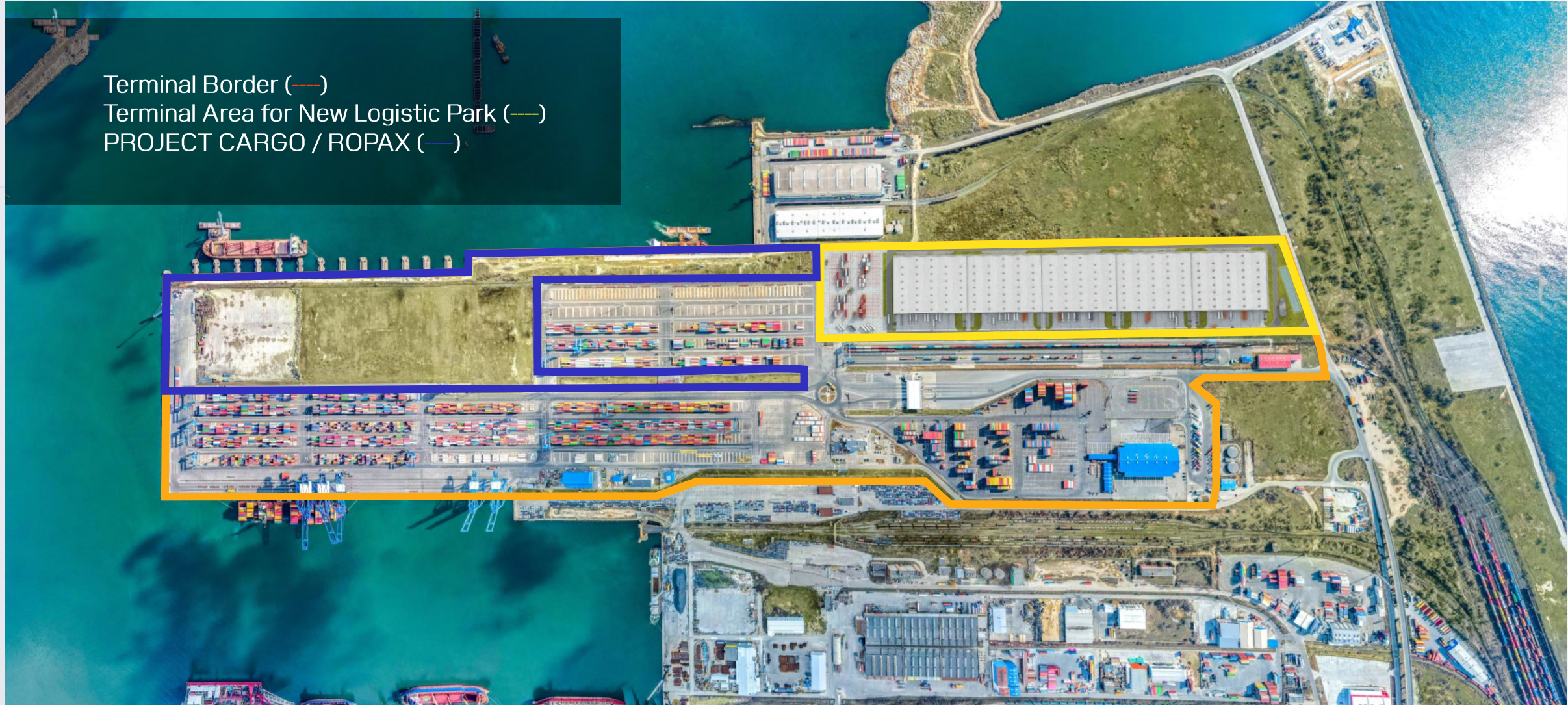
Terminal Border (—)

Terminal Area for New Logistic Park (—)

PROJECT CARGO / ROPAX (—)

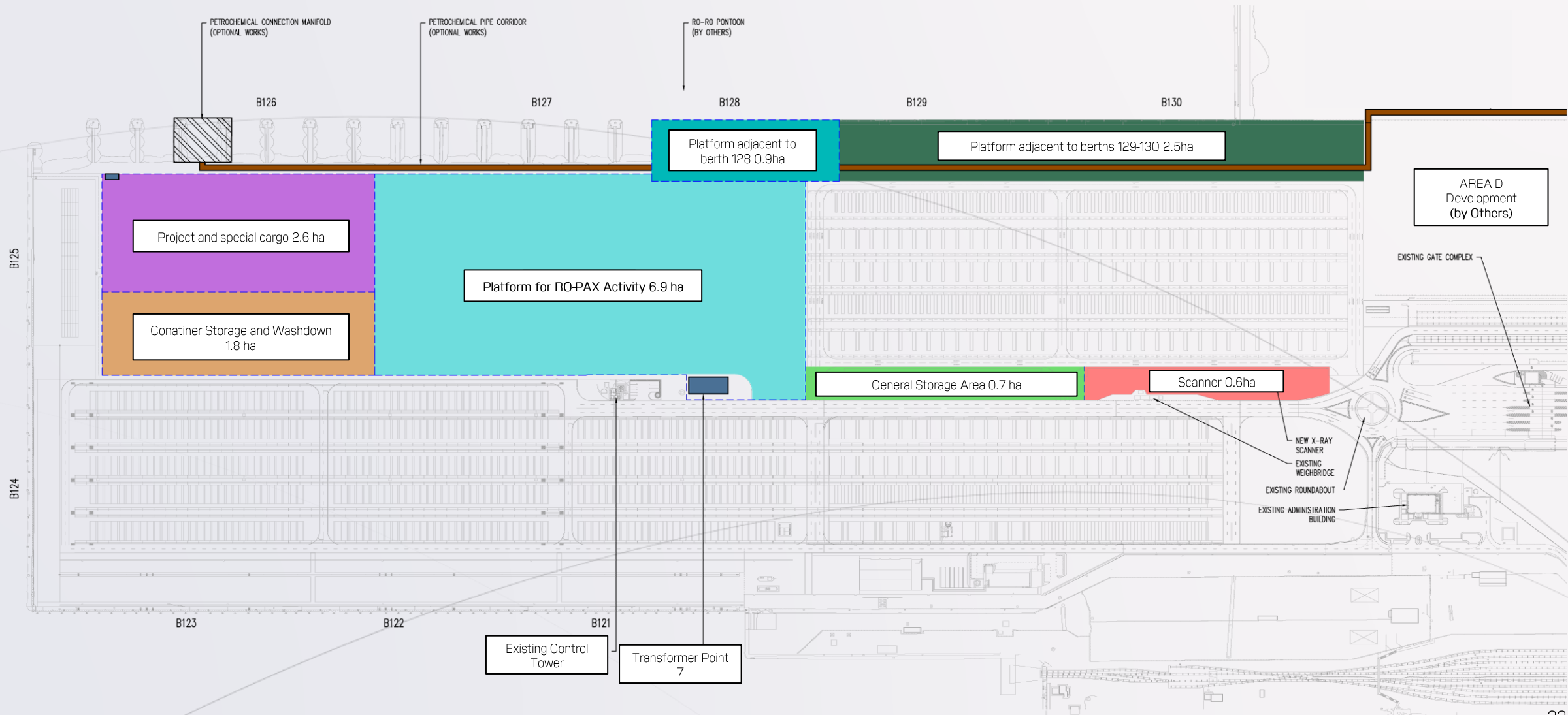


# OUR DEVELOPMENT PROJECTS



# DEVELOPMENT PLAN

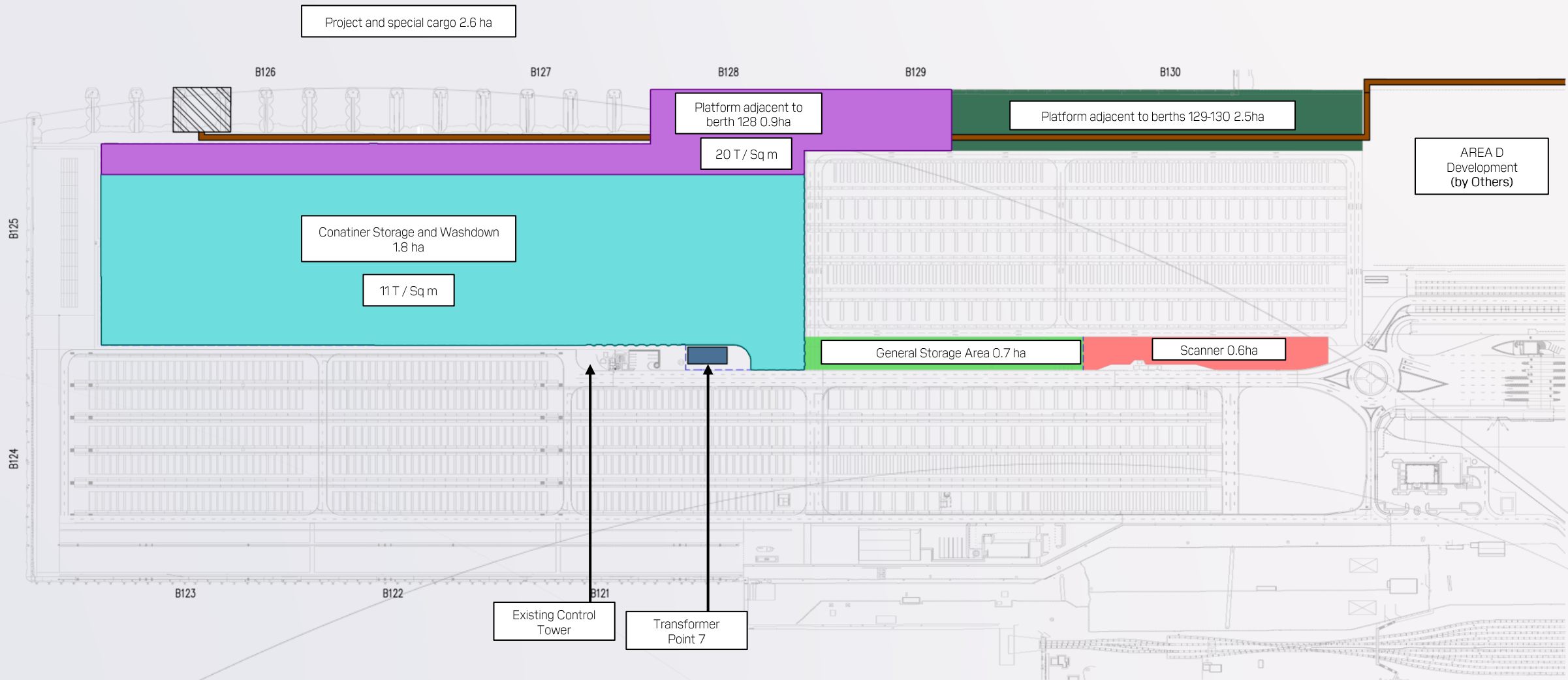
## Terminal Expansion





# DEVELOPMENT PLAN

## Terminal Expansion



# DEVELOPMENT PLAN

## RO-RO & PROJECT Cargo Hub

Diversification of the activities performed in Area A will create real stickiness for our customers, giving confidence in bringing additional containers volumes which can be linked with general cargo and project cargo activities.

- Platform developed in area A can cater for several additional seasonal businesses that have already been requested by customers but could not have been fulfilled due to lack of development:
- Containerization of general cargo
- Empty containers inspection and depot activities
- Project Cargo activities such as Military cargo
- Cargo Scanner

Surface Area: 160,000 sqm

Project Cargo storage area: 70,000 sqm

ROPAX Facility: 40,000 sqm

Additional berth: 500 m length

Dedicated ROPAX and General Cargo berth: 400 m





# DEVELOPMENT PLAN

RO-RO & PROJECT Cargo Hub

## NEW OPPORTUNITIES

- Fully developed ROPAX facility
- Dedicated berth
- Separate gate access
- Integrated solution of loading and unloading of trailers to/from rail wagons
- Direct connectivity with all Black Sea Ports
- Specialized equipment's available for RORO operations



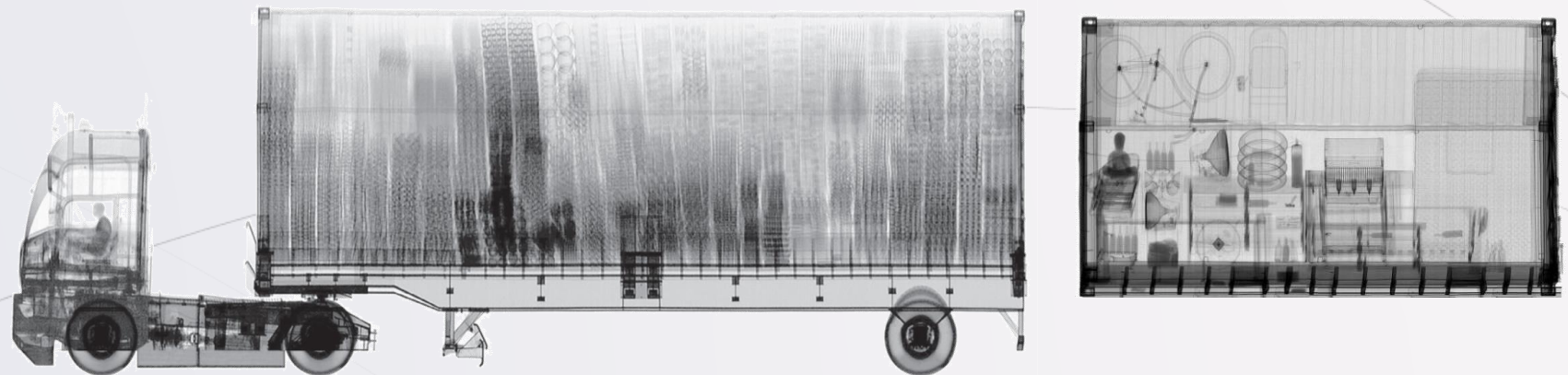


# DEVELOPMENT PLAN

## SCANNER PROJECT

### NEW OPPORTUNITIES

- Rapid and effective screening of trucks and trailers with minimum interruption of traffic
- Fully automatic scan process and drive through solution up to 60 trucks/hour
- Placed inside of the facility resulting no impact in delivery of goods
- Speedup delivery of goods from the terminal
- Reducing physical inspections of goods





# DEVELOPMENT PLAN

NEW LOGISTIC CENTRE





# DEVELOPMENT PLAN

## NEW LOGISTIC CENTRE

DPWC New Logistic Centre will be part of the Maritime Container Terminal, located in our free tax environment, and offer importers and exporters in Central Europe speedier and more cost-effective access to the Far East and Middle East market, than movement via the traditional routing over North Continental ports by avoiding congested intermodal bottlenecks in Western Europe.

Proposed commercial activities planned in area D will include:

Cargo handling in the warehouse (stripping/stuffing)

Cargo Storage for all customers:

Additional container moves from stack to warehouse and back to yard,

We anticipate the generation of additional volumes from vessels from new customers to the terminal.

Empty containers inspection and depot activities required to further sustain and boost Romanian

Total Surface Area: 120,000 sqm

Class A Warehouse: 45,000 sqm

Storage concrete platform: 30,000 sqm





# DEVELOPMENT PLAN

NEW LOGISTIC CENTRE

NEW OPPORTUNITIES

Inside the terminal premises

Free tax environment due to port free zone

Ideally located for import distribution center & export hub;

Direct access to A2 Highway to Bucharest – 4km

Direct connections with national electrified  
rail infrastructure

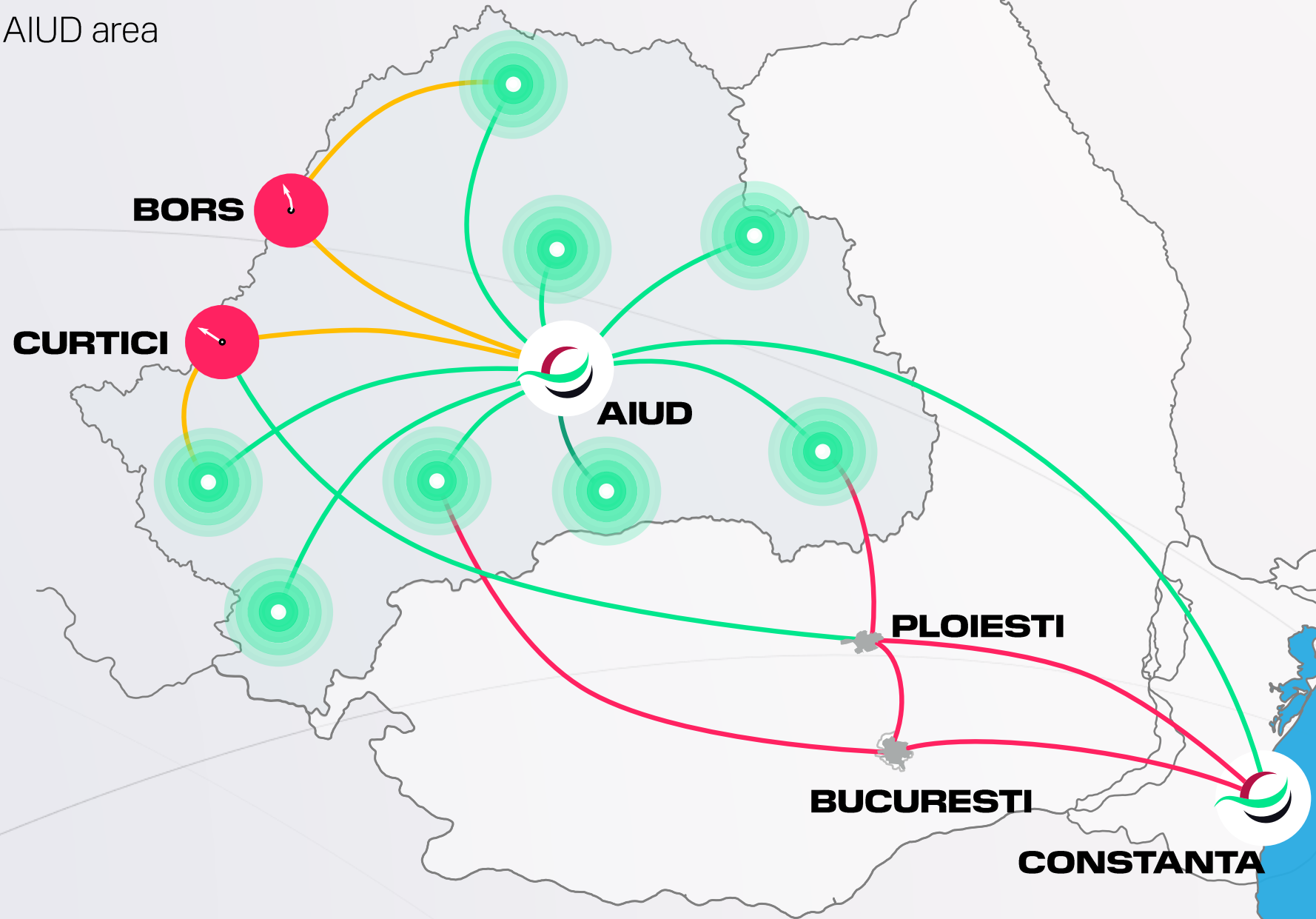
35 km from Mihail Kogalniceanu Airport

40 km to Bulgarian border; 150 km to Varna



# DEVELOPMENT PLAN

New Intermodal terminal AIUD area





# DEVELOPMENT PLAN

New Intermodal terminal AIUD area





# DEVELOPMENT PLAN

## New Intermodal terminal AIUD area

DP World Constanta has been researching and developing a strategy to create a network of Intermodal Terminals / ICDs in order to gain greater exposure to Romania's trade flows both intra EU as well as maritime flows.

Location for initial ICD concluded in central Transylvanian region of Romania. This location, is in the heart of an area that contributes 50% to industrial sourced share of the Romania's GDP, and thus offers DPW the opportunity to increase market share of overall trade.





# DEVELOPMENT PLAN

## New Intermodal terminal AIUD area

The facility will be developed for multimodal use, offering the following services:

Warehouse logistics and rail & truck loading/unloading

Stripping/stuffing

Ambient & temperature-controlled warehouses

Office spaces

Truck yard parking

### Current development proposal:

- ICD: 82,152 m<sup>2</sup>
- Rail connection: 2.8 km
- Internal rail shunting = 2.5 km

### Logistic Park (excluding external soft and hard landscaping)

- Unit A: 13,713 m<sup>2</sup>
- Unit B: 22,549 m<sup>2</sup>
- Unit C: 26,816 m<sup>2</sup>
- Unit D: 26,549 m<sup>2</sup>





**DP WORLD**

**THANK YOU**

**DP World Constanta**

Tel: +40 241700100

Email: [office.csct@dpworld.com](mailto:office.csct@dpworld.com)