



**DP WORLD**

## Port Guidelines for IMDG Class 5 Cargo

### Prerequisites for IMDG Class 5 Cargo

1

#### **SIRA Approval**

*(Required only for Import & Export  
Restricted Cargo)*

[SIRA Restricted Cargo List](#)

[SIRA Web Service](#)

Tel: **600500100**

Email: [info@sira.gov.ae](mailto:info@sira.gov.ae)

2

#### **PCFC-EHS NOC**

*(Required for Import, Export, &  
Transshipment)*

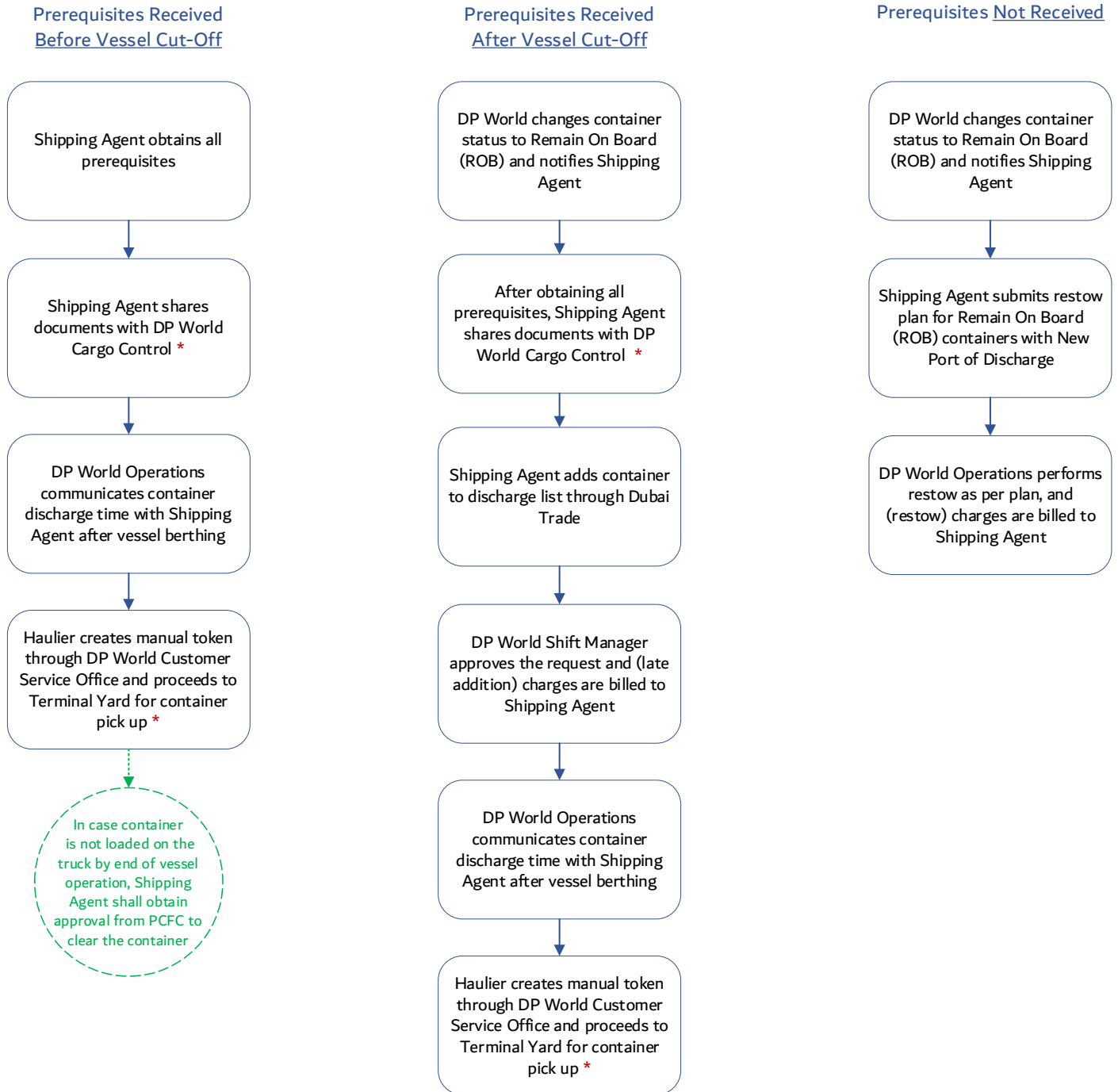
[EHS NOC Guidelines](#)

[EHS Online Web Services](#)

Tel: **800990**

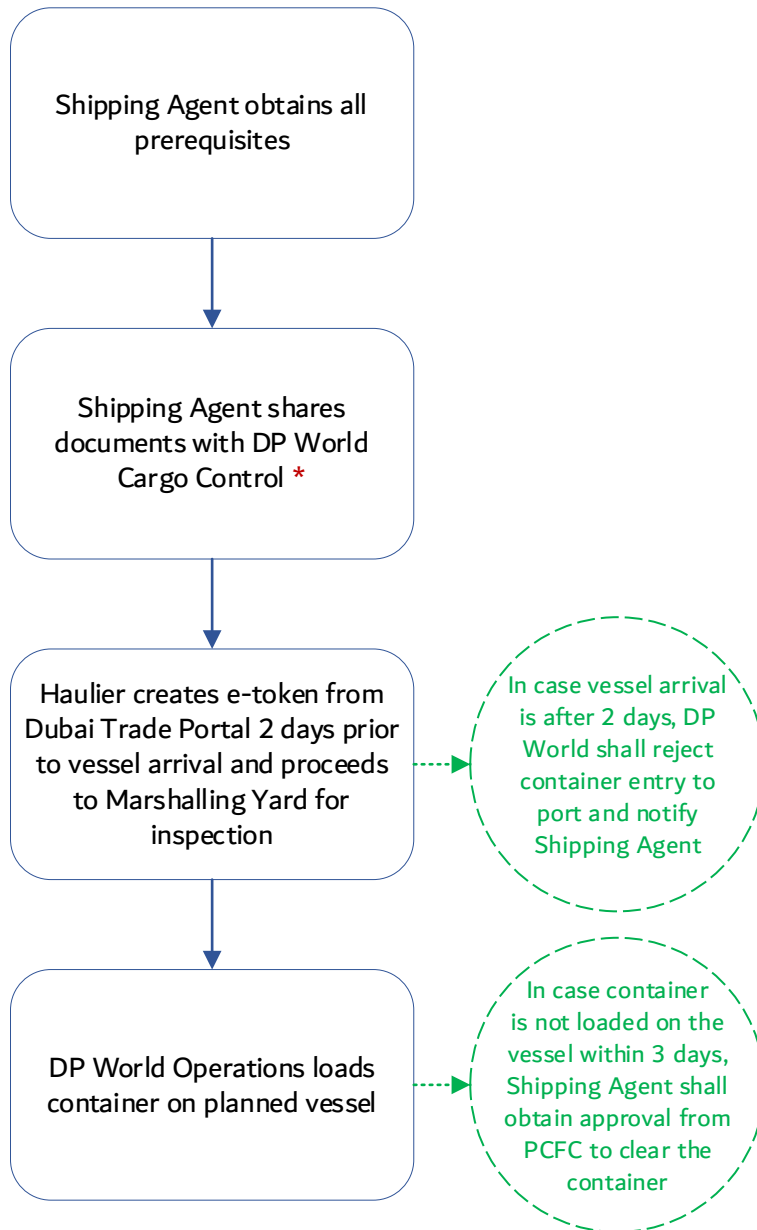
Email: [info@pcfc.ae](mailto:info@pcfc.ae)

# Import (Direct Delivery) IMDG Class 5 Cargo



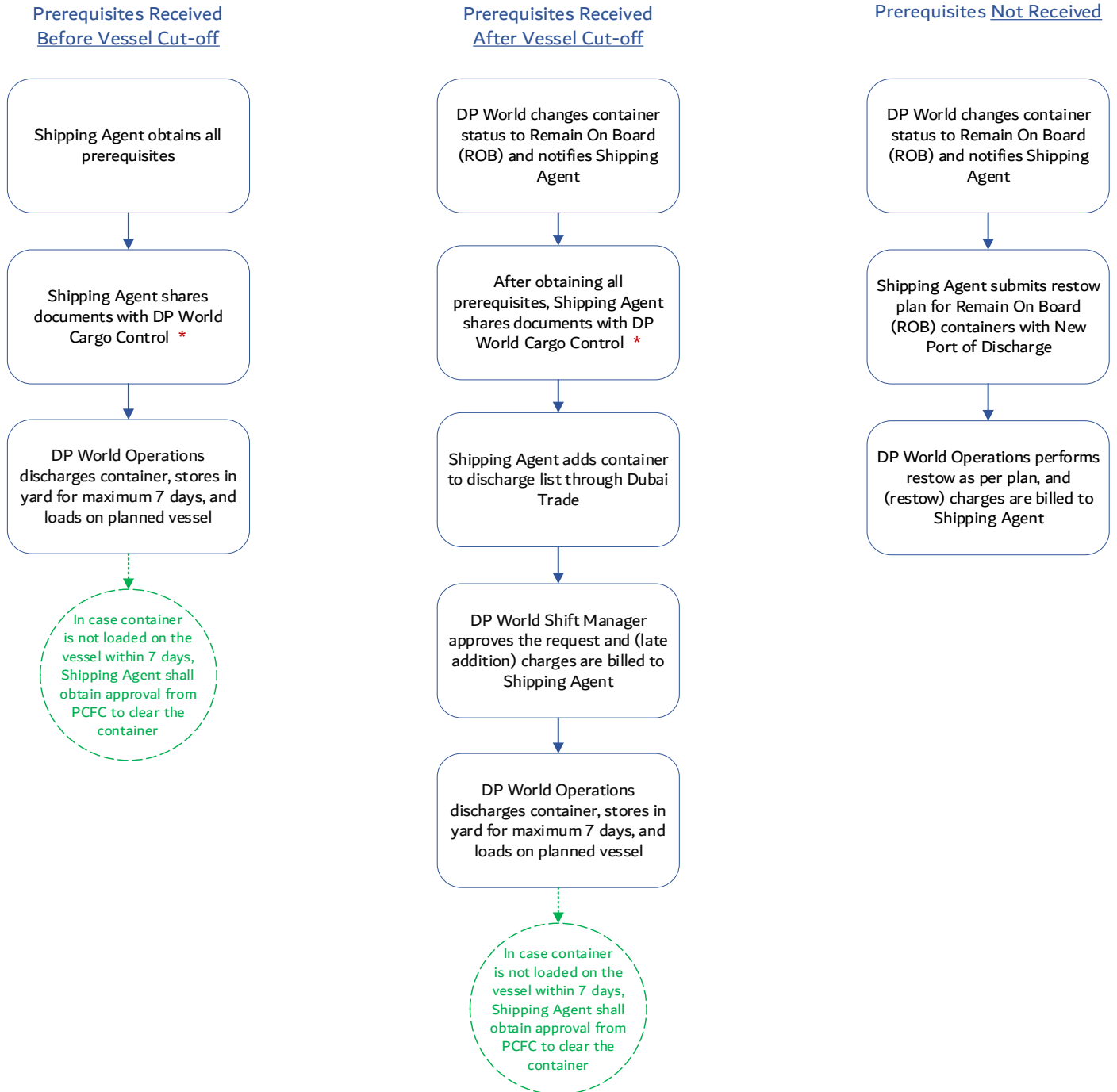
\* Please refer to page 5 for contact information

## Export (3 Days Storage) IMDG Class 5 Cargo



\* Please refer to page 5 for contact information

# Transshipment (7 Days Storage) IMDG Class 5 Cargo



\* Please refer to page 5 for contact information

### DP World Customer Service

- Location
  - <https://goo.gl/maps/fKDSsJaxRFvDZDHw5>
- Working Hours
  - Monday to Saturday: 7:00 AM – 11:00 PM
  - Sunday: 7:00 AM – 7:00 PM
- Tel: +971 4 8897766
- Email: [Documentation-JA@dpworld.com](mailto:Documentation-JA@dpworld.com)

### DP World Cargo Control

- Tel: +971 4 8898533 / +971 4 8898536
- Email: [InputSection.JA@dpworld.com](mailto:InputSection.JA@dpworld.com)