

INVESTOR GUIDE

# **BERBERA ECONOMIC ZONE**



**DP WORLD**  
ECONOMIC ZONES  
BERBERA

# 1. Definitions

## 1.1. Company Formation

Somaliland Special Economic Zone Authority (SSEZA) offers several formation types that enable investors to establish their entities to suit individual requirements.

To form an entity within the Berbera Economic Zone (BEZ) the investor(s) must choose one of the following formation types:

- Special Economic Zone Establishment (SEZE)
- Special Economic Zone Company (SEZCO)
- Branch of a Company

### Special Economic Zone Establishment (SEZE)



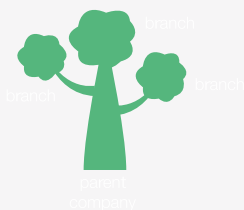
SEZE registration allows for a single shareholder. A shareholder can be an individual/person or a non-individual/company. SEZE is essentially a Limited Liability Company, meaning that the liabilities of the company are limited to its capital paid. A SEZE has a legal personality distinct from that of its shareholder and has the capacity, rights and privileges of a person.

### Special Economic Zone Company (SEZCO)



SEZCO registration allows for multiple shareholders (up to 50). A Shareholder can be an Individual/person or a non-individual/company. A SEZCO is essentially a Limited Liability Company meaning that the liabilities of the company are limited to its capital paid. A SEZCO has a legal personality distinct from that of its shareholder and has the capacity, rights and privileges of a person.

### Branch of a Company



A branch is considered a legal entity of its parent company; it is 100% owned by the parent company, operates under the same name, and conducts the same business.

## 1.2. Licenses & Activities

The type of activity your business undertakes will dictate the types of licence along with the most appropriate facility you will require in BEZ.

### Trading:

- **Trading Licence:** Allows the holder to import, export and distribute a fixed number of products specified on the licence.
- **General Trading Licence:** Allows the holder to import, export & distribute an unlimited range of products specified on the licence.

### Industrial:

- Allows the holder to import raw materials, carry out the manufacture of specified products and export the finished product to other countries as well as sell to the local market and to other BEZ Entities.

### Service:

- Allows the holder to carry out the services specified on the licence primarily targeted at offering services to BEZ entities and where the license holder does not hold inventory of any physical products. Such services can include Banking, Insurance, Inspection, Audit and Retail.

### Logistics:

- Allows specified logistics services (e.g., storage, transportation, distribution, sorting, forwarding, and clearing activities, order management, inventory management etc.)

### E-Commerce:

- To carry out buying and selling of goods and services over electronic networks via any electronic means.

## 1.3. Facilities

BEZ offers a range of facilities specifically designed to meet a variety of business needs. BEZ entities can simply select the type that suits their business best interest.

### Serviced Land Plots



The Serviced Land Plot is infrastructure ready to use for purpose-built facilities. Choose the perfect size plot for your business, available in short and long-term lease, ideal for companies wishing to construct their own facility.

### Warehouses



BEZ offers pre-built warehouses to meet customer's need for high quality storage and light manufacturing. The pre-built warehouses are of high quality and units are available on a rental basis.

### Customised development solutions



This solution enables the investor to request BEZ to build facilities in the zone to meet the exact requirements on a turn key basis which can then be leased on a long term basis or sold to the investor.

### Offices



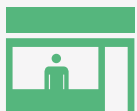
Office space in BEZ has been designed to be as forward thinking as the companies it houses. Choose from state-of-the-art spaces that can be tailored to suit your needs, with each office available unfurnished, ensuring your style and taste are easy to implement.

### Business Centre



The BEZ Business Centre provides ready-to-use, fully furnished offices making it perfect for short term or long-term use. Business centre users can be upgraded to a fully-fledged office when needed and are counted as part of the BEZ community.

### Retail outlets



BEZ offers a choice of retail outlet space in its office building.

# 2. Steps for registration

There are six simple steps to register your company through the BEZ One-Stop-Shop (OSS):

## 1. Enquiry:



Enquiry details are captured on enquiry form and registered accordingly for initial evaluation of potential customers. Enquiries come through customer visits, telephone, and email contact, through our website interaction page, trade fairs, referrals, among others.

## 2. Application:



Potential investors who successfully go through the initial evaluation receive application form for registration, license, and lease. The investor is advised on all the registration requirements to comply with the application guidelines.

## 3. Documents attestation:



Attestation of documents accompanying the completed application form.

## 4. Application evaluation:



Upon return of completed application form, BEZ One-Stop-Shop (OSS) team will review the same for completeness and compliance of guidelines and forward to SSEZA with approval request.

## 5. Authority approval:



The Authority upon review of the file and recommendation from BEZ OSS grants approval for registration of the company and issuance of license/s subject to the relevant lease agreement being signed with BEZ.

## 6. Handover of registration documents:



BEZ OSS processes and issues registration certificate, license and lease agreement to the investor.

# 3. Documents required

The following documents are required for registration of entities within BEZ:

## All applications:



1. Application form and EHS form (where relevant)
2. Passport and/or National ID: copy for manager, directors, shareholder(s) and secretary
3. Project summary
4. Memorandum & Articles of Association: Attested

## Individual applications (SEZE/SEZCO)



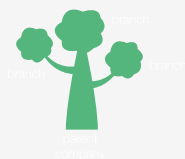
1. Business profile of shareholder(s)
2. Board Resolution and Power of Attorney: Attested
3. Specimen signature of manager, shareholder/s, director, and secretary, (not mandatory initially): Attested

## Non-Individual (Company) APPLICATIONS(SEZE/SEZCO)



1. Certificate of Registration: Attested
2. Specimen signature of manager: Attested
3. Resolution & Power of Attorney: Attested

## Branch of a Company



1. Certificate of Registration: Attested
2. Resolution or & Power of Attorney: Attested
3. Specimen signature of manager: Attested



# 4. Fees

This section provides a comprehensive break down of the fees involved when setting up your company in BEZ.

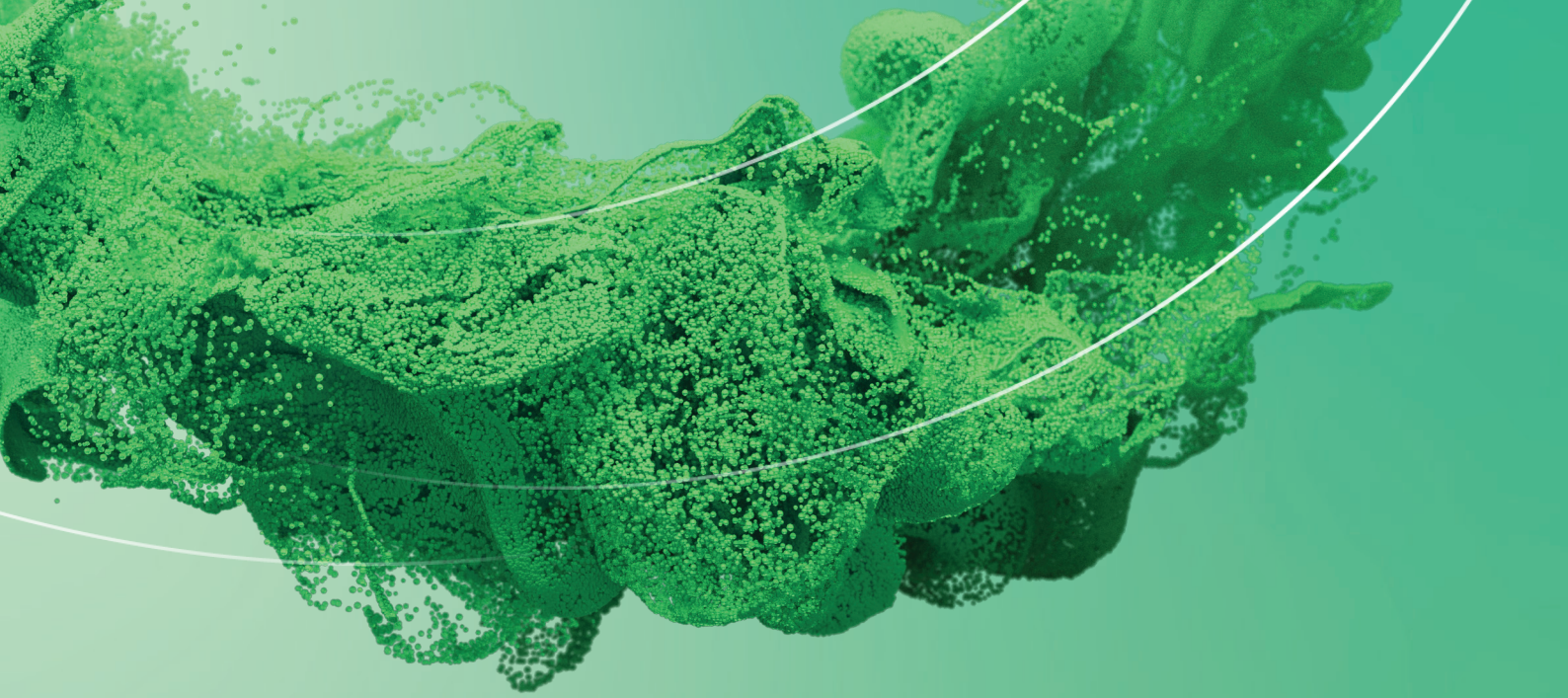
## Registration Fees

	Item	Price-USD
1	Special Economic Zone Establishment	2,000
2	Special Economic Zone Company	2,000
3	Branch (Local and foreign)	2,000

## Licence Fees

	Item	Price-USD
1	Trading license (7 products)	2,000
2	Trading license (12 products)	3,000
3	General Trading license	4,000
4	Service license	2,000
5	Industrial license (7 products)	2,000
6	Industrial license (12 products)	3,000
7	Logistics license	4,000
8	E-commerce license	2,000





**DP WORLD**  
ECONOMIC ZONES

[BEZ@dpworld.com](mailto:BEZ@dpworld.com)  
[www.dpworld.com/BEZ](http://www.dpworld.com/BEZ)  
[www.dpworld.com](http://www.dpworld.com)