

DP World UAE Region

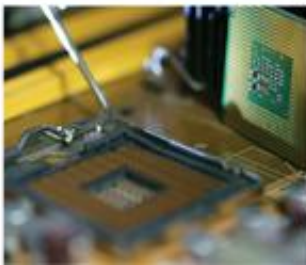
October 2017

Creating the Future, **Now.**



Our Vision

To Lead the Future of World Trade



Our aim is to have a sustainable positive impact on economies and societies

We are a Leading **Enabler of Global Trade**

We help our customers manage the complexities and reduce the costs of the global supply chain

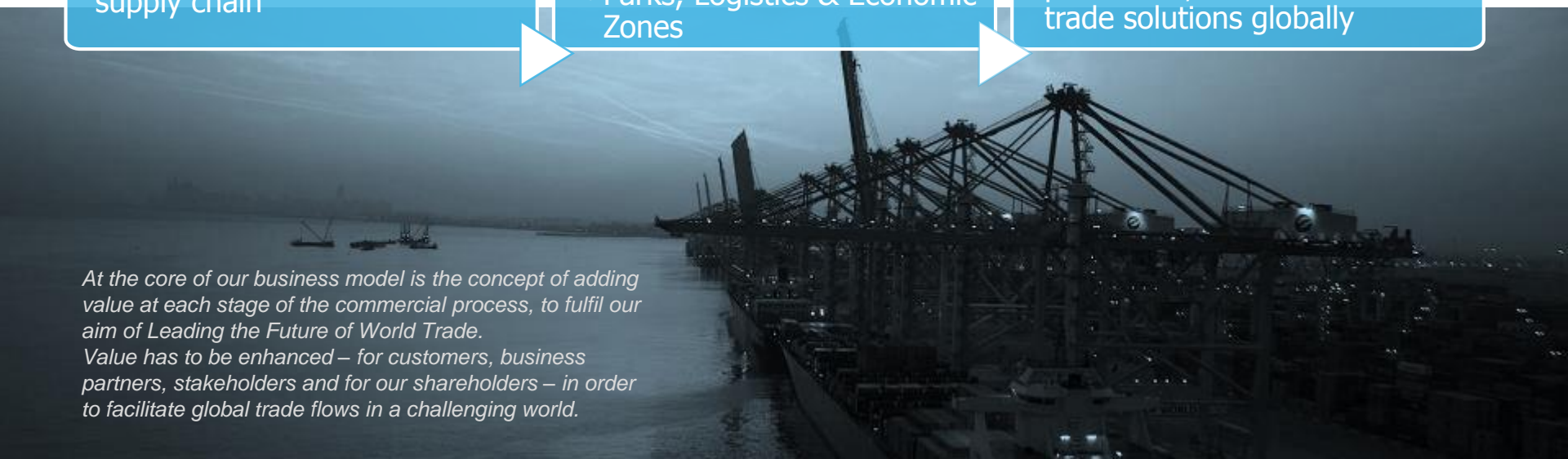
Our business focus areas include:

- Ports and Terminals
- Parks, Logistics & Economic Zones

By thinking ahead, foreseeing change and innovating, we aim to create the most productive, efficient and safe trade solutions globally

At the core of our business model is the concept of adding value at each stage of the commercial process, to fulfil our aim of Leading the Future of World Trade.

Value has to be enhanced – for customers, business partners, stakeholders and for our shareholders – in order to facilitate global trade flows in a challenging world.



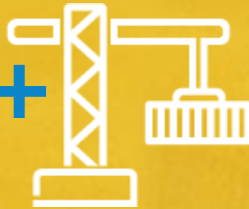
Global



78 Marine and inland terminals

15 Terminal development projects completed over the last five years

1,660+ cranes



63.7 Mn TEU Handled in 2016, ▲ 3.2% YOY
Handled **34 Mn TEU** in H1 2017, ▲ 7.7% YOY

40 countries



36,500

People from 103 countries

We serve around

66,000 vessels a year



or nearly

180 vessels a day

Our Portfolio



- ASIA PACIFIC & INDIAN SUBCONTINENT**
- China: Hong Kong, Qingdao, Tianjin, Yantai
 - Indonesia: Surabaya
 - India: Chennai, Mumbai, Cochin, Mundra, Nhava Sheva
 - Korea: Pusan
 - Kurdistan: Duhok
 - Pakistan: Karachi, Lahore
 - Philippines: Batangas, Manila, General Santos
 - Thailand: Laem Chabang
 - Vietnam: Ho Chi Minh

- MIDDLE EAST, EUROPE & AFRICA**
- Algeria: Djazair, Djen Djen
 - Belgium: Antwerp, Liège
 - Djibouti: Djinnouti, Doraleh
 - Egypt: Sokhna
 - France: Marseille, Le Havre
 - Germany: Duisburg, GERMERSHEIM, Mannheim, Stuttgart
 - Mozambique: Maputo
 - Netherlands: Rotterdam
 - Rwanda: Kigali
 - Romania: Constanta
 - Spain: Tarragona
 - Saudi Arabia: Jeddah
 - Turkey: Yarmica
 - United Kingdom: London, Southampton
 - United Arab Emirates: Dubai

- AUSTRALIA & AMERICAS**
- Argentina: Buenos Aires
 - Australia: Fremantle, Melbourne, Sydney, Brisbane
 - Brazil: Santos
 - Canada: Prince Rupert, Vancouver, Nanaimo
 - Dominican Republic: Caucedo
 - Ecuador: Posorja
 - Peru: Callao
 - Suriname: Paramaribo, Paranem

85
Mn TEU
78
Terminals

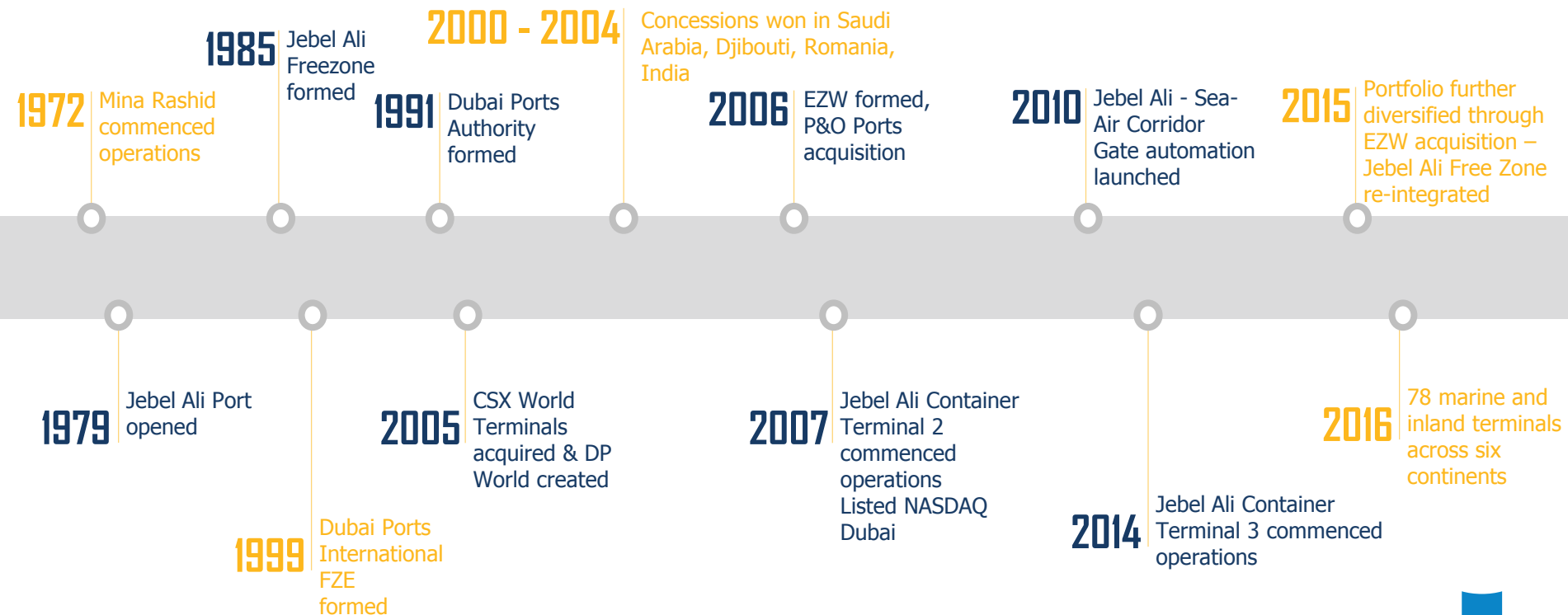
85 Mn TEU gross capacity ;
78 terminals in 40 countries
across 6 continents

37K

Globally, we employ
36,500 employees
from 103 countries



Our History



Committed to Sustainability

... the way we are committed to being a responsible business now

... the lens through which we make all of our decisions

... core to ensuring our business is successful both today and tomorrow

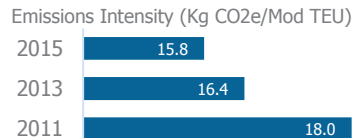
DP world is constructing the largest distributed solar rooftop project in the Middle East

- Project includes installation of 88,000 solar panels on DP World's facilities in Dubai
- Panels will produce enough clean power for 3,000 homes a year
- Project supports the UAE Vision 2021 for a sustainable environment
- It will result in 22,000 tonnes of carbon being saved annually, equivalent to taking 4,500 cars off the road. The solar panels will provide 40% of the total energy consumption of Jafza, one of the world's largest free trade zones.



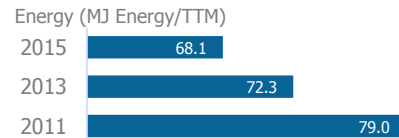
12%

Reduction achieved in our emission intensity in 5 years
(kgCO₂e/ModTEU) from 2008 base year



14%.

Over the past five years, we have reduced our energy use, by 14%.



UAE Region

Our flagship
Jebel Ali Port



Mina Al Hamriya
Mina Rashid
Jebel Ali Port

1

Jebel Ali Port – World's 10th largest container port

2

Mina Rashid – Passenger and multipurpose cargo port

3

Mina Al Hamriya – Multipurpose cargo port

Dubai - Center of Commerce



Geographical Location

Midway between Asia and Europe
 Trade gateway for GCC, ISC and Africa
 Population access of over 2 Bn
 Host to the World Expo 2020

Supportive Environment

Pro-business government
 Cosmopolitan city: High standard of living
 Diverse environment : 200+ Nationalities
 High standards of safety and security

Trade and Logistics Hub

AED 1.3 trillion Dubai Non-oil trade (2016)
 Largest domestic market in the region
 Home to World's busiest airport and 10th largest container port

UAE



5

Marine terminals
in the UAE Region

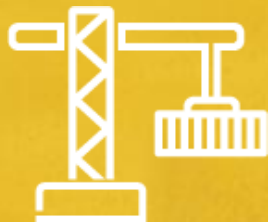
Jebel Ali Port (3)
Mina Rashid (1), Mina Al
Hamriya (1)

#10

Jebel Ali Port – DP World's
flagship facility, 10th
largest container port
globally

102

STS Cranes at
Jebel Ali (2017)



14.7 Mn TEU
Handled in 2016

7.7 Mn TEU in H1
2017, ▲ 4.3% YOY

34

Kilometres of quay
across UAE terminals



8,000

People across UAE
Region

Jebel Ali Port
handles approx.

11,000

vessels a year



or nearly

30

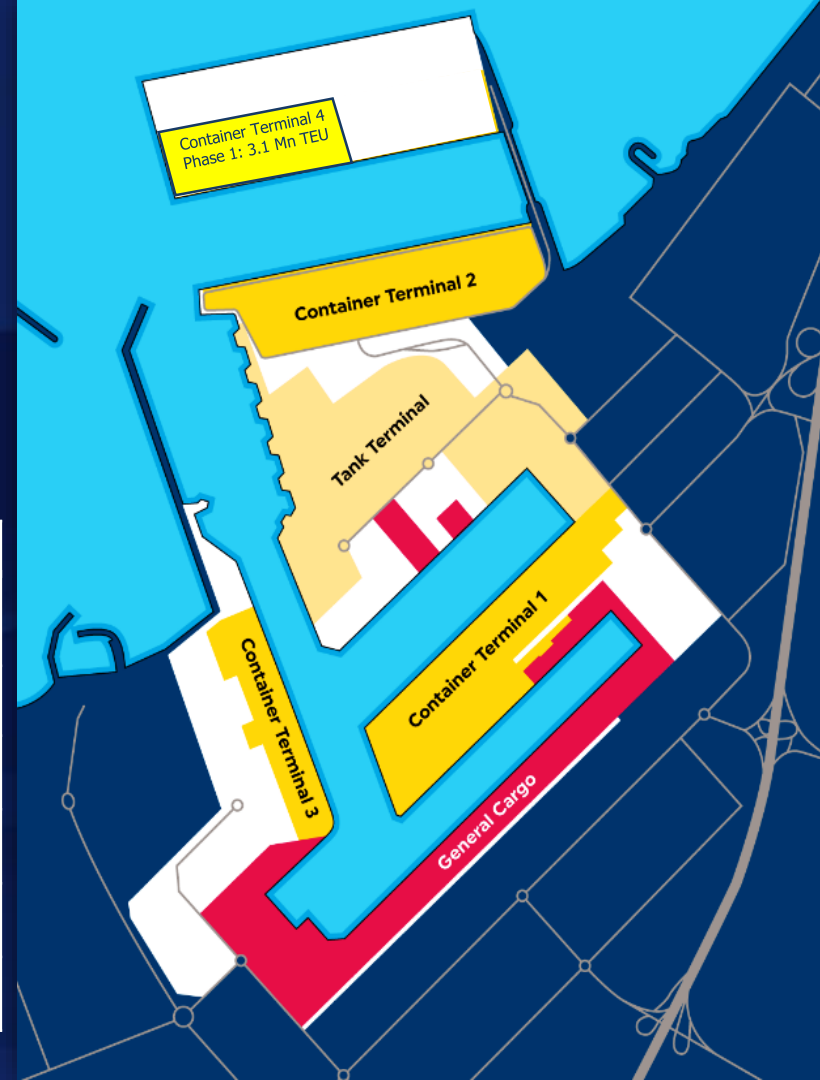
vessels a day

Jebel Ali Port - Our Flagship Facility

World's Most Productive port (JOC)

Jebel Ali is the only non Far-East Port to make it to the world top ten ports
 Over 25 Kms of quay length
 Poly-functional capabilities
 In-house marine and pilotage services

Facility	Capacity	Details
Container Terminal	19.3 million TEU by 2017	28 berths ; 102 quay cranes (19 remote operated)
General Cargo	Over 1.4 million sqm	27 berths
RORO	Over 360,000 sqm	Handling capacity of over 750,000 units
CFS/Warehousing	Over 200,000 sqm	Open & Covered storage facilities
Temperature Controlled Storage	Approx 10,000 sqm	-29°C to +20°C
Tank Terminal	Over 2.0 million sqm	11 berths ; Petroleum and petrochemical products



Performance and Recognitions

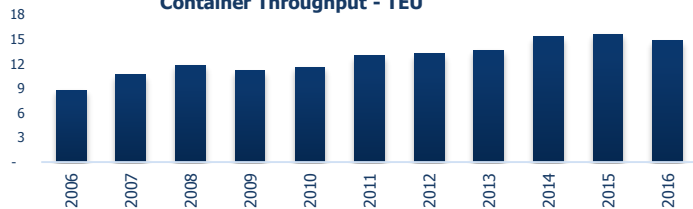
Productivity

Jebel Ali Port - World's most productive port

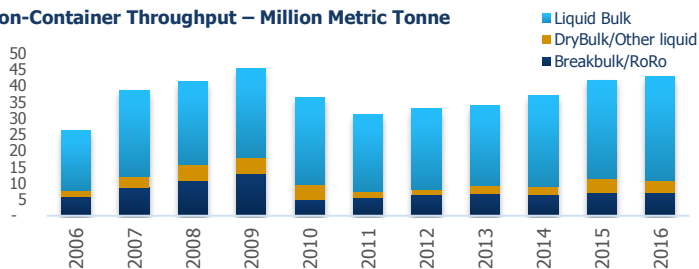
Journal of Commerce (JOC survey based on 2014 figures). Jebel Ali Port led the industry with an average of 131 moves per vessel hour (MPH) and stood ahead of more than 700 ports worldwide
Awarded as Best Seaport in Middle East for 21 consecutive years by Asian Freight & Supply Chain Awards (AFSCA)

Volume Performance

Container Throughput - TEU



Non-Container Throughput – Million Metric Tonne



Certifications



ISO 9001:2008

Quality Management System



EFQM 5 Stars

European Foundation For Quality Management

ISO 20000-1:2011

Information technology Service Management systems



ISO 27001:2013

Information Security Management System

ISO 28000:2007

Security Management System for Supply chain

CTPAT

CTPAT recognition for DP World UAE Region Ports



ISO 14001:2004

Environmental Management System

ISO 18001:2007

Health & Safety Management System

OHSA 18001:2007

Occupational Health and Safety Management Systems

ISO 10002:2014

Customer Satisfaction Management System

ISO 17020:2012

General criteria for operation of various types of bodies performing inspection

ISPO

International standard for Maritime Pilot organization

Jebel Ali Port - Container & Non-Container Facilities



Container	Terminal 1	Terminal 2	Terminal 3*	Terminal 4* (Phase 1)	Total
Area (Mn sqm)	2.05	3.0	0.7	-	5.75
Capacity (Mn TEU)	9.0	6.5	3.8	3.1	22.4
Quay Length (m)	4,875	3,000	1,862	1,200	10,937
No of Berths	15	8	5	-	28
Depth (m)	16	16	17	18	
Quay Cranes	51	32	19	13	115



General Cargo Facility	Details
Area (Mn sqm):	Over 1.4
Quay Length (m):	Over 4,900
No of Berths:	27
Max Depth (m):	15
Yards (sqm):	Over 700,000
RORO Storage:	Capacity: Over 750,000+ Vehicle units Multi-tier parking facility under development (200K sqm; +12K CEU)



Oil & Petrochemical Handling Facility	Details
Area (Mn sqm):	Over 2.0
No of Berths:	11
Depth (m)	14

* Terminal 3 details as per post-completion in 2017 and T4 completion based on market demand.

Jebel Ali Port - Logistics Center



Container Freight Station/ Warehousing

Area	134,343 sqm
Covered Storage area	Over 80,000 sqm
Open Storage area	Over 220,000 sqm

Cool Store

Floor area	3,900 sqm
Capacity	3,240 pallets
Chambers	3
Temperature	+10° C to +20° C



Cold Store

Floor area	5,372 sqm
Capacity	8,183 pallets
Chambers	9
Temperature	-29°C to +13°C

Commercial Trucking

Proven capability for door-to-door pick-ups and deliveries	Equipment (In Nos):
Terminal Tractors	53
Trailors	92



Multimodal Connectivity

Gateway to the UAE:
Largest domestic market
in the region

Hub to the GCC and the
Wider region

Market access to
population of 2 Bn+:
Dubai is World's 3rd
largest re-export market



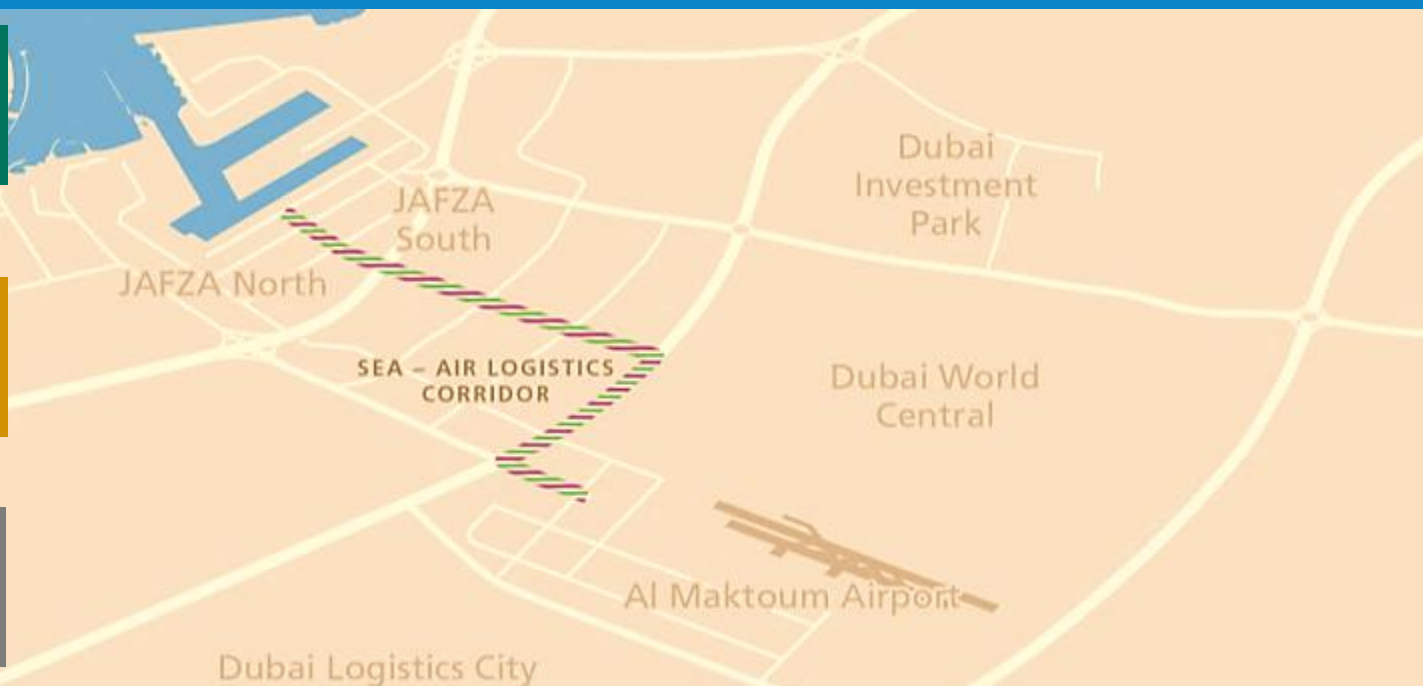
Sea Connectivity:
80+ Weekly services
140+ Direct ports of call
180+ Shipping lines



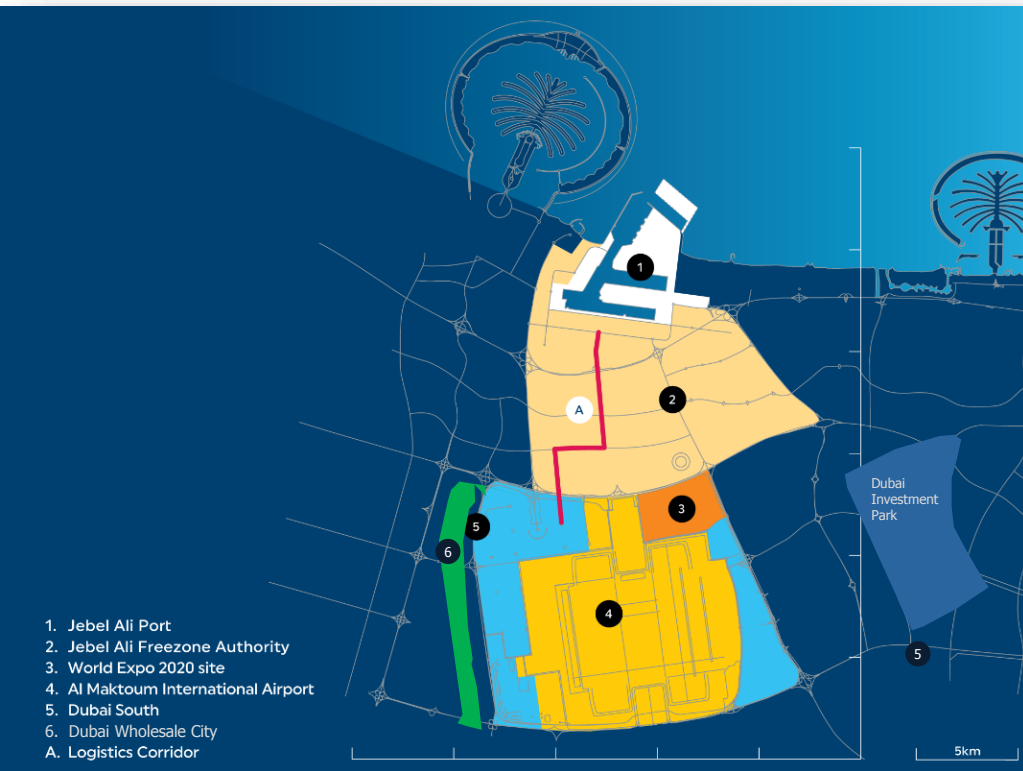
A dedicated sea-air customs
bonded corridor, connecting a sea-
air box within 45 minutes of
discharge



Connected to the main UAE/GCC
Road network – 2 to 3 days road
Transit to anywhere in the GCC.



Jebel Ali - An Integrated Logistics Hub



100+ Sqkm customs bonded commercial & industrial logistics park

JAFZA

7,000+ companies, sustains 144,000 jobs

Jafza generates Trade worth \$ 87.6 Billion

+12% of air freight at Dubai International Airport

Contributes 20.6% to Dubai's GDP, 5% to UAE's GDP

Land/plots, warehouses, showrooms, office buildings, retail outlets, onsite residences, other customised solutions

Other Industrial

Dubai key freezones make up for over 60% of Dubai's exports & re-exports

DIP: 4,600 companies across 2,300 Ha

Dubai South (DWC): Over 2,500 companies. 14,500 Ha of land area.

Dubai Wholesale City: Spans over 500 Mn sqft. Expected to house over 15,000 wholesale traders

Technology and Innovation



Quay cranes

Remote operated cranes
19 remote workstations



Eagle Eye monitoring

Simulated Panoramic, real time view of infrastructure, Equipment and mobile activity, ensuring Higher safety and security at the yards



Remote operated ARMG's

Auto container handoff (ACH)
50 at T3, manned across 16 desks



Remote Tally Station

HD Camera monitoring
Enables better accuracy of data and supporting visuals (historic) can be stored upto 6 months



Gate Automation

Average Truck Turnaround Time in 2015
(Terminal Gate-in – Gate-out):
22 Minutes



Port community portal

Single window platform
More than 200 e-services enabling efficient paperless transactions, smart apps

Vessel Turnaround time improved by 7% YOY during 2015

Truck Turnaround time improved by 26% YOY
(from 30 mins in 2014 to 22 mins in 2015)

11% yoy improvement in berth productivity
(Average bmph in 2015: 157)

Dubai Trade

Seamless Trade Solutions



Exports & Imports



Free Zone Companies



Freight Forwarders & Custom Brokers



Shipping Lines & Agents



Transport Companies



Financial Institutions



Emirates Sky Cargo



Government Agencies



Jafza



دبي التجارية
DUBAI TRADE



Dubai Customs

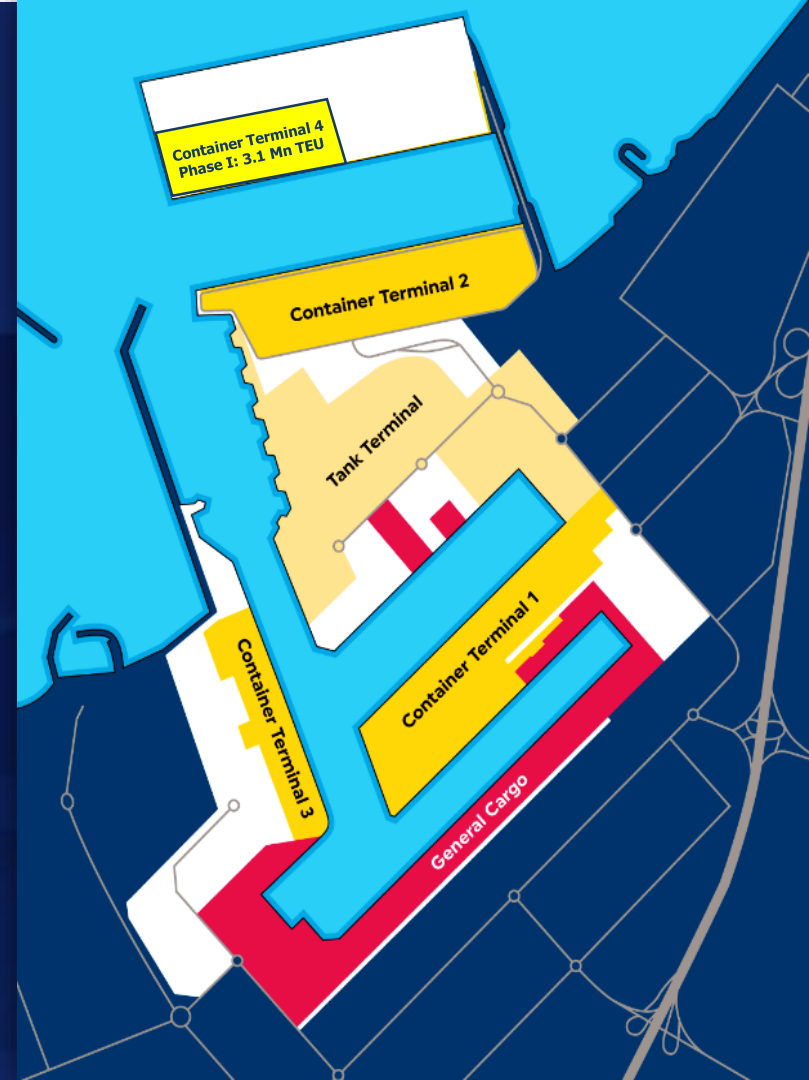


DP World



Insurance Providers

Jebel Ali Port - Hub for Regional Trade



Thank you

