



**DP WORLD**



WHO WE ARE

# THE WORLD'S LEADING PROVIDER OF SMART LOGISTICS

## WHAT WE DO

### Ports & terminals

Building and operating world-class, multipurpose container terminals.

### Economic zones

Building ecosystems of opportunity for global trade.

### Marine services

Delivering comprehensive global solutions for the whole maritime industry.

### Logistics

Door-to-door cargo solutions that bring the world closer together.

# OUR GLOBAL FOOTPRINT

THE WORLD'S LEADING PROVIDER OF SMART LOGISTICS



DP WORLD



Over **295**  
BUSINESS UNITS

In **78** COUNTRIES

Across **6**  
CONTINENTS

# OUR HOME DUBAI UNITED ARAB EMIRATES

We are Dubai:  
your #1 global hub  
for trade, tourism,  
events and lifestyle

**A DIVERSIFIED  
ECONOMY  
EMBRACING  
TECHNOLOGICAL AND  
RESEARCH-BASED  
INDUSTRIES  
WITH EVENTS  
AT ITS HEART**



## KEY FACTS

A thriving **international city** located on the Arabian gulf.

Home to more than **200 nationalities** speaking more than **140 languages**

Tolerant, hospitable and welcoming



## DUBAI IN NUMBERS

#1 World's most cosmopolitan city

1<sup>st</sup> Arab Nation in the 2020 global innovation index

1<sup>st</sup> MENA Nation – 2020 ease of doing business ranking

Top 20 ranking in the 2020 logistics performance index

## CONNECTOR AND ENABLER OF TRADE

Gateway to the UAE: largest domestic market in the region

Hub to the GCC, Africa and South Asia regions












Connecting to 3.5Bn regional population

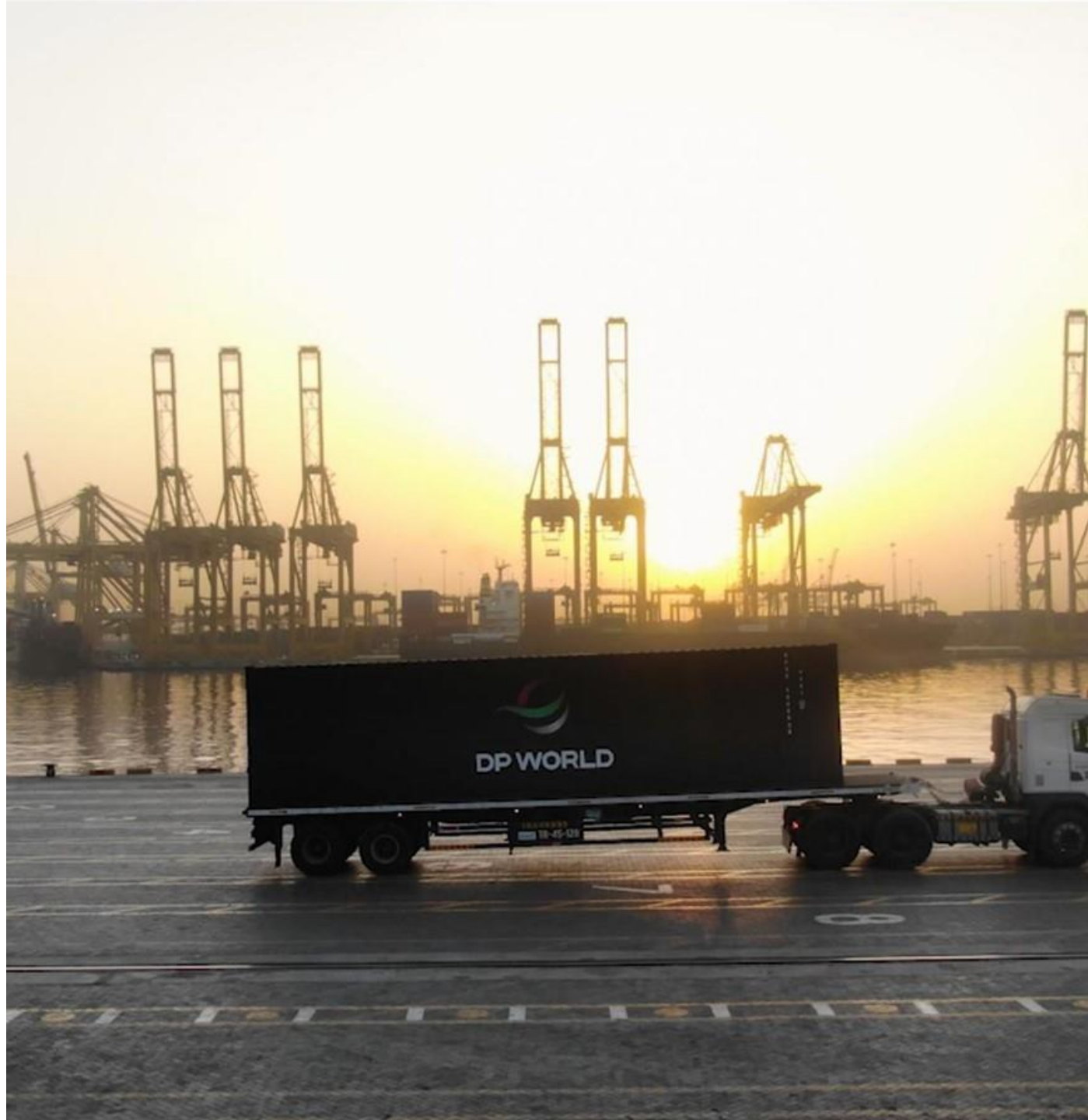
Access to 65% of global GDP within 8-hour flight radius



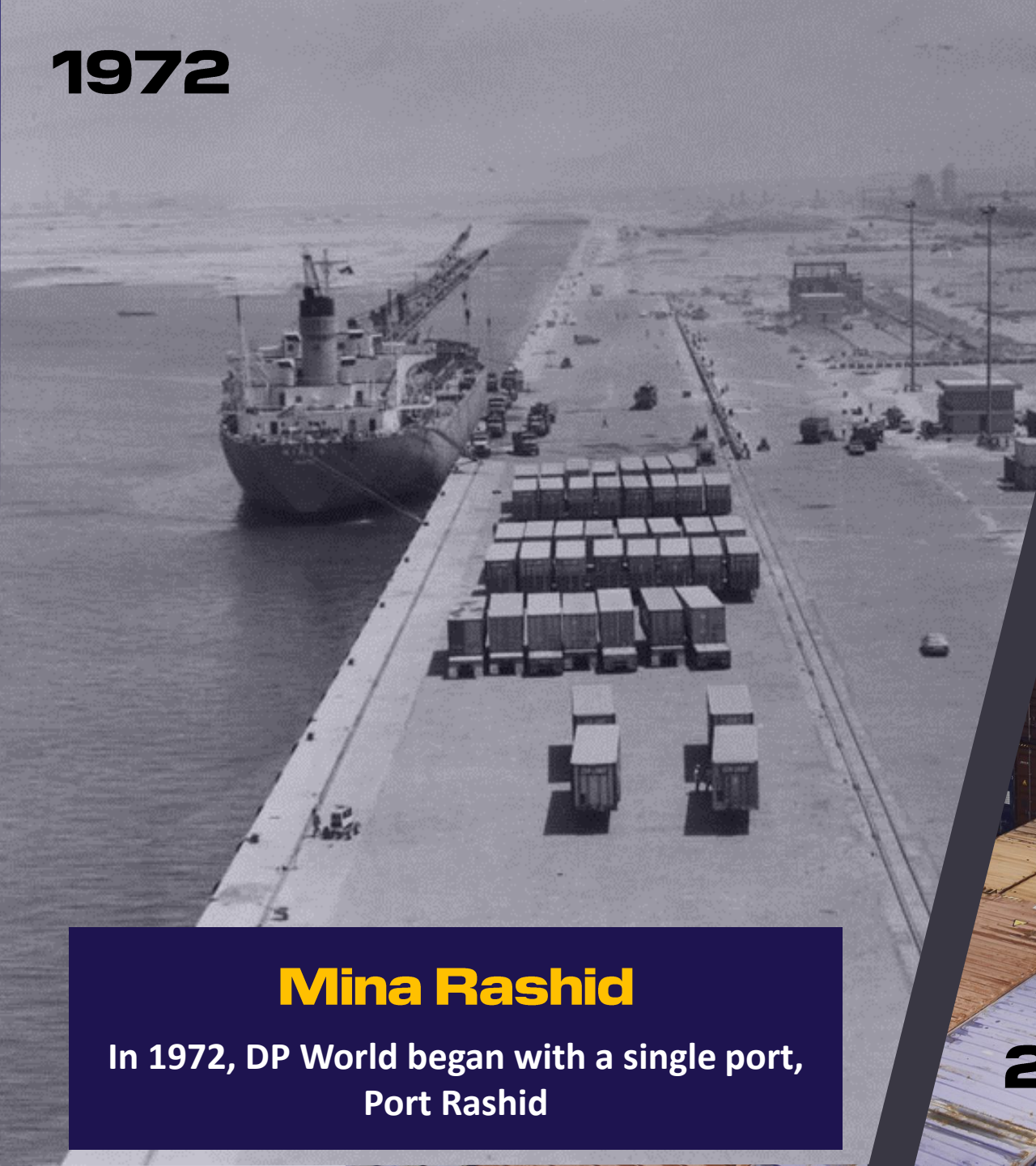
# OUR INTEGRATED ECOSYSTEM FOR GLOBAL TRADE

We are in the business of enabling smarter trade along the supply chain from manufacture to consumption

<b>PORTS AND TERMINALS</b>	 <span>JEBEL ALI PORT</span> <span>MINA RASHID</span> <span>MINA AL HAMRIYAH</span>
<b>ECONOMIC ZONES</b>	   
<b>LOGISTICS</b>	 <span>AVANA</span> <span>PERMA</span>
<b>MARINE SERVICES</b>	 <span>UNIFEEDER</span> <span>FEEDERTECH</span> <span>TRANSWORLD</span>
<b>TECHNOLOGY</b>	   



**1972**



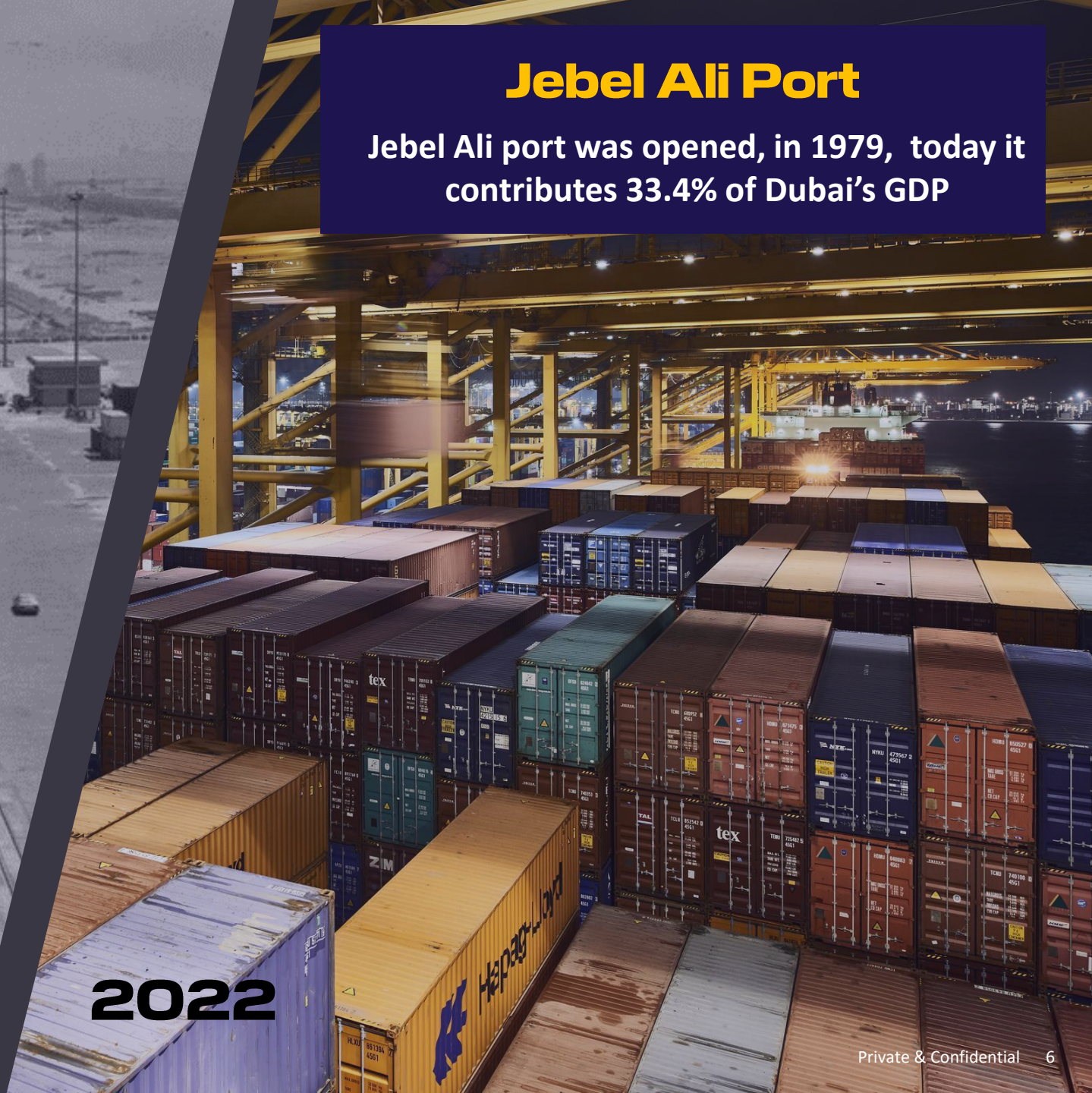
## **Mina Rashid**

In 1972, DP World began with a single port,  
Port Rashid

## **Jebel Ali Port**

Jebel Ali port was opened, in 1979, today it  
contributes 33.4% of Dubai's GDP

**2022**





PORTS & TERMINALS

# DP WORLD HAS DEVELOPED A STATE-OF-THE-ART NETWORK OF MARINE INFRASTRUCTURE IN THE UAE



**180+**

Global ports have direct connection to the UAE

**13.7** MN

TEUs handled in 2021

**11**

Marine & inland terminals

# JEBEL ALI PORT KEY FACTS

Jebel Ali Port is the largest port between Rotterdam and Singapore; a regional distribution hub and essential gateway to global trade



**3<sup>rd</sup>**

Largest re-export market in the world

**12<sup>th</sup>**

Largest container port globally

**80%**

Dubai's trade volume handled through Jebel Ali Port

**22.4<sub>MN</sub>**

TEU capacity across 4 container terminals

**100+**

Berths across 25 kilometers of quay for container, liquid, general cargo and RORO terminals



# EXCEPTIONAL MULTIMODAL CONNECTIVITY

One-of-a-kind multimodal environment under a single custom bonded area enabling efficient trade flows

- JAFZA is ideally located alongside regions largest deep seaport of **Jebel Ali**.
- 40 Kms / 40 Mins from **Dubai International Airport** and 24 Kms / 30 Mins from **Al Maktoum International Airport**.
- Accessible from all Major Domestic and National **Highways** e.g. E11, E311, E611 etc. seamlessly connecting JAFZA to other Emirates and neighbors.
- Connected to local transport network of **Buses** and **Dubai Metro Red Line**.
- Adjacent to **Dubai Expo 2020 site**.



Sea Connectivity:  
80+ Weekly services  
150+ Direct ports of call  
180+ Shipping lines



A dedicated sea-air customs bonded corridor, connecting a sea-air box within 45 minutes of discharge

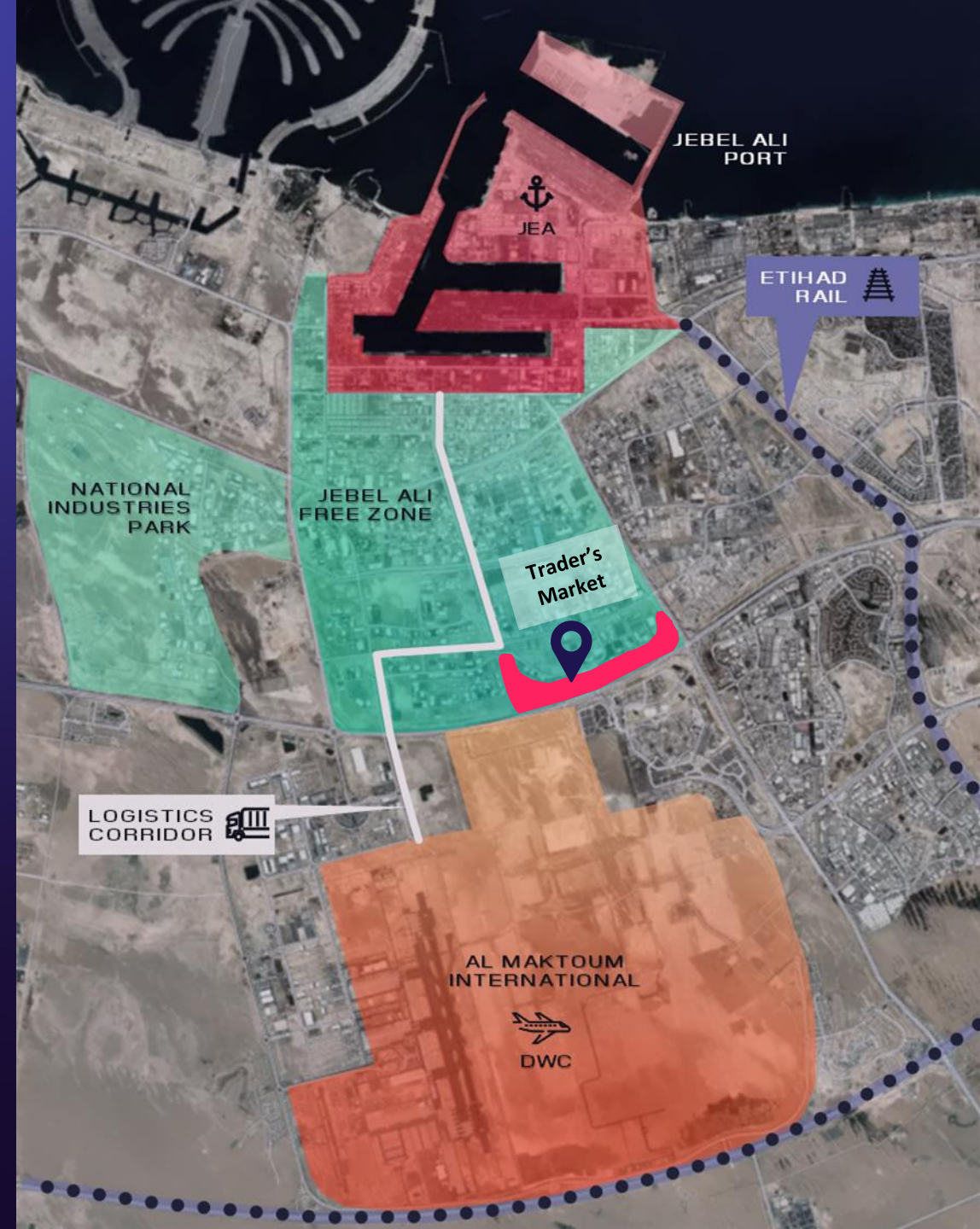


Connected to the main UAE/GCC Road network – 2 to 3 days road Transit to anywhere in the GCC.



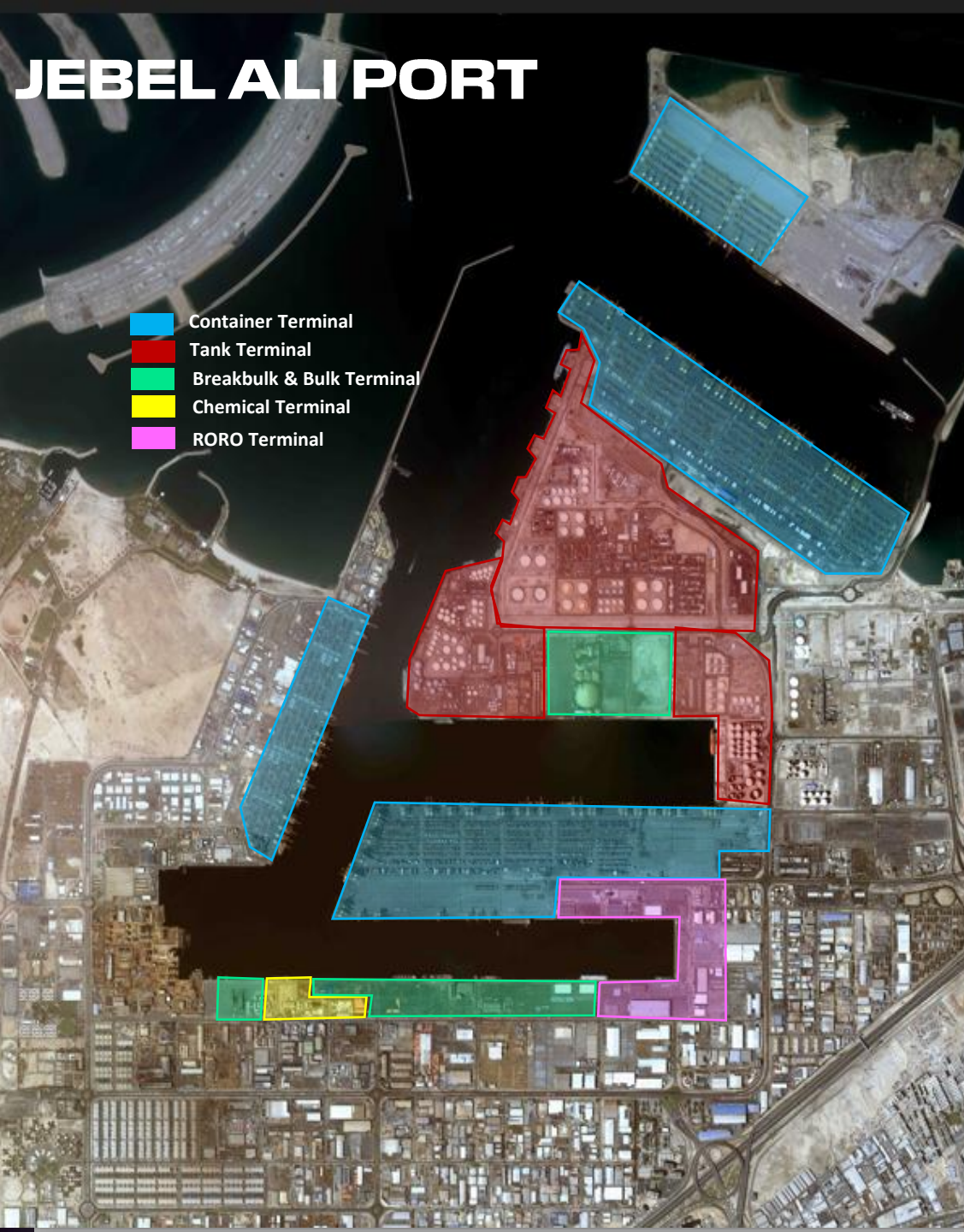
Ethihad Rail will have a depot within Jebel Ali facility, connecting UAE to GCC

**24/7 uninterrupted trade connectivity to all major world destinations**



# JEBEL ALI PORT

- Container Terminal
- Tank Terminal
- Breakbulk & Bulk Terminal
- Chemical Terminal
- RORO Terminal

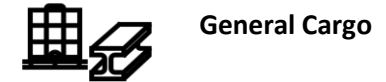


# THE REGION'S LARGEST POLYFUNCTIONAL PORT



## CT (Terminals 1-4)

Area (Mn sqm)	6.25
Capacity (Mn TEU)	19
Quay Length (m)	10,920
No of Berths	31
Depth (m)	17
Quay Cranes	109



## General Cargo Terminal

Area (Mn sqm)	Over 1.4
Quay Length (m)	5,069
No of Berths	27
Depth (m)	11-15
GC Yard (sqm)	1.2 Mn



## Tank Terminals

Area (Mn sqm)	Over 2.0
No of Berths	11
Depth (m)	15



## RORO Terminal

Handling Capacity (CEU)	1 Mn
Car Yard (sqm)	229k
Storage Capacity (CEU)	27k

# TRADITIONAL GATEWAYS

Total Area (sqm)	373,600
Berths (nos)	17
Depth (m)	10.5
Quay length (m)	3,021



## Mina Rashid

- Proximity to trading market
- Accessibility to the used car market
- Short approach for docking of vessels
- Capabilities to handle conventional, steel vessels & car carriers

Total Area (sqm)	318,267
Berths (nos)	9
Depth (m)	7
Quay length (m)	1,800



## Mina Hamriya

- Situated amidst Dubai's busiest trading hub
- Houses one of the region's largest **veterinary inspection and quarantine facility**
- All types of ships being handled from wooden dhows to multi purpose vessels

Total Area (sqm)	1,600,000
Berths (nos)	43
Depth (m)	8
Quay length (m)	5,000



## Marfa & Creek

- Historic gateway supporting traditional trade
- Close proximity to the Heart of the city with convenient access to the Market
- Facilitate food trade through Dubai on wooden dhows to various destinations



ECONOMIC ZONES

# THREE DECADES OF EXPERIENCE SUPPORTING BUSINESSES AND ENTREPRENEURS TO ACHIEVE THEIR AMBITIONS

**78** MN SQM

combined area of  
economic zones

**9,000+**

Companies  
registered

**120+**

billion dollars of  
trade facilitated

# ECONOMIC ZONES PORTFOLIO

DP World operates four economic zones in Dubai



JAFZA is DP World's flagship free zone; as the first and largest free zone of the region, it lies at the center of trade and part of a unique ecosystem that offers end-to-end solutions. JAFZA is home to over 9,000 companies from key industrial and logistics sectors.



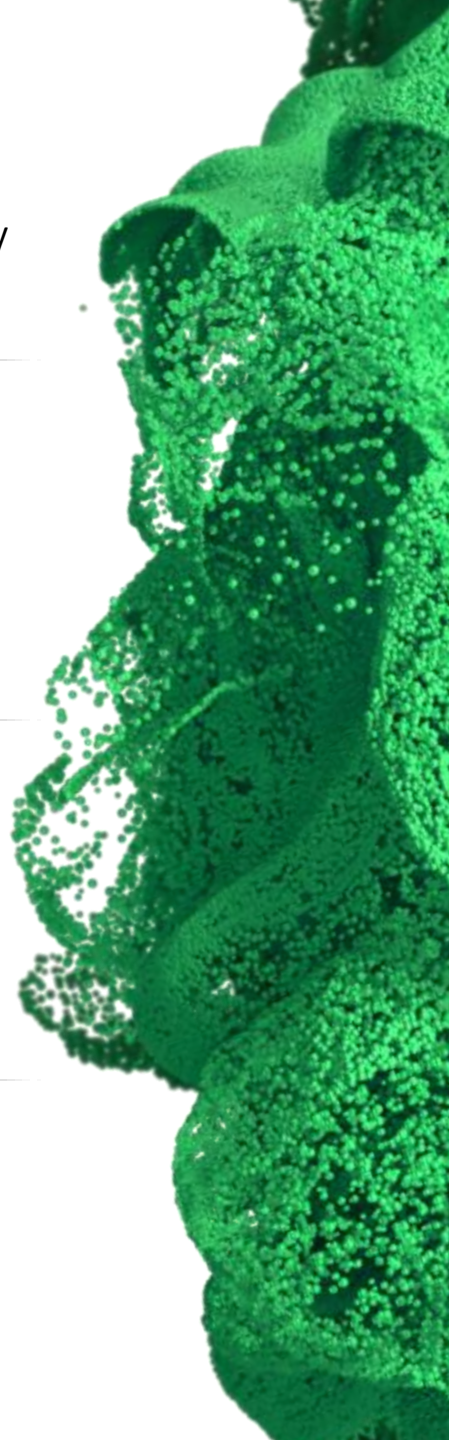
National Industries Park occupies onshore designated land in the heart of Dubai's new industrial district; it offers a seamless connection to the supply chain.



Dubai Auto Zone is home to the GCC's largest used car marketplace. It facilitates all aspects of cross-border vehicle trade and provides enhanced connectivity to customers through Jebel Ali Port.



Dubai Textile City is a collaboration with the Textile Merchants Group (Texmas) focused on nurturing the growth of the UAE's textile industry through an integrated space with warehouses, showrooms and offices for textile companies.



# JEBEL ALI FREE ZONE IN NUMBERS

Jebel Ali Free Zone (JAFZA) is the region's main logistics and trade hub, a partner for large MNCs and SMEs

**57** KM<sup>2</sup>

Total area; offering array of products such as land, warehouses, offices, staff residence retail etc

**130,000** Jobs

added to the UAE economy

**USD 124** Bn

Worth of trade facilitated during 2021

**400**

of top global logistics services providers facilitating seamless trade

**33%**

Contribution to Dubai GDP (DP World UAE Region)

**9,000+**

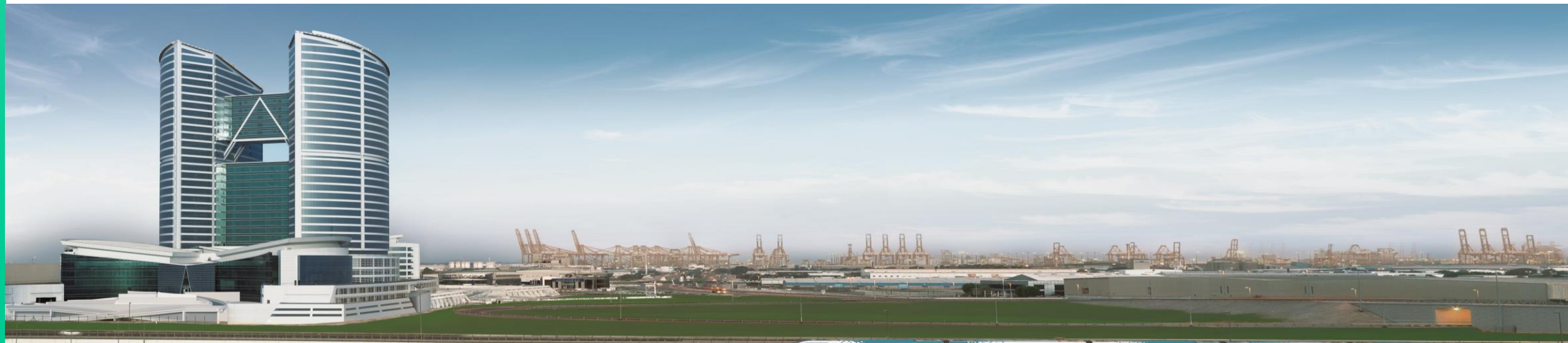
Interdependent happy customers

**100**

Of the top fortune 500 companies call JAFZA their home

**5-star**

integrated digital and physical service channels to satisfy all incorporation and employment requirements



# JEBEL ALI FREE ZONE BENEFITS

JAFZA provides a business-friendly environment from beginning to end



## JAFZA PROVIDES A BUSINESS-FRIENDLY ENVIRONMENT FROM BEGINNING TO END



**100%** Ownership of Companies



**0%** Personal Income Tax



No Restriction on  
Capital Repatriation



No Restriction on Foreign Talent  
or Employees



Onsite Customs



**0%** Corporate Tax for 50 Years  
(Renewable concession)



**0%** Duties  
on Import/Export or Re-export



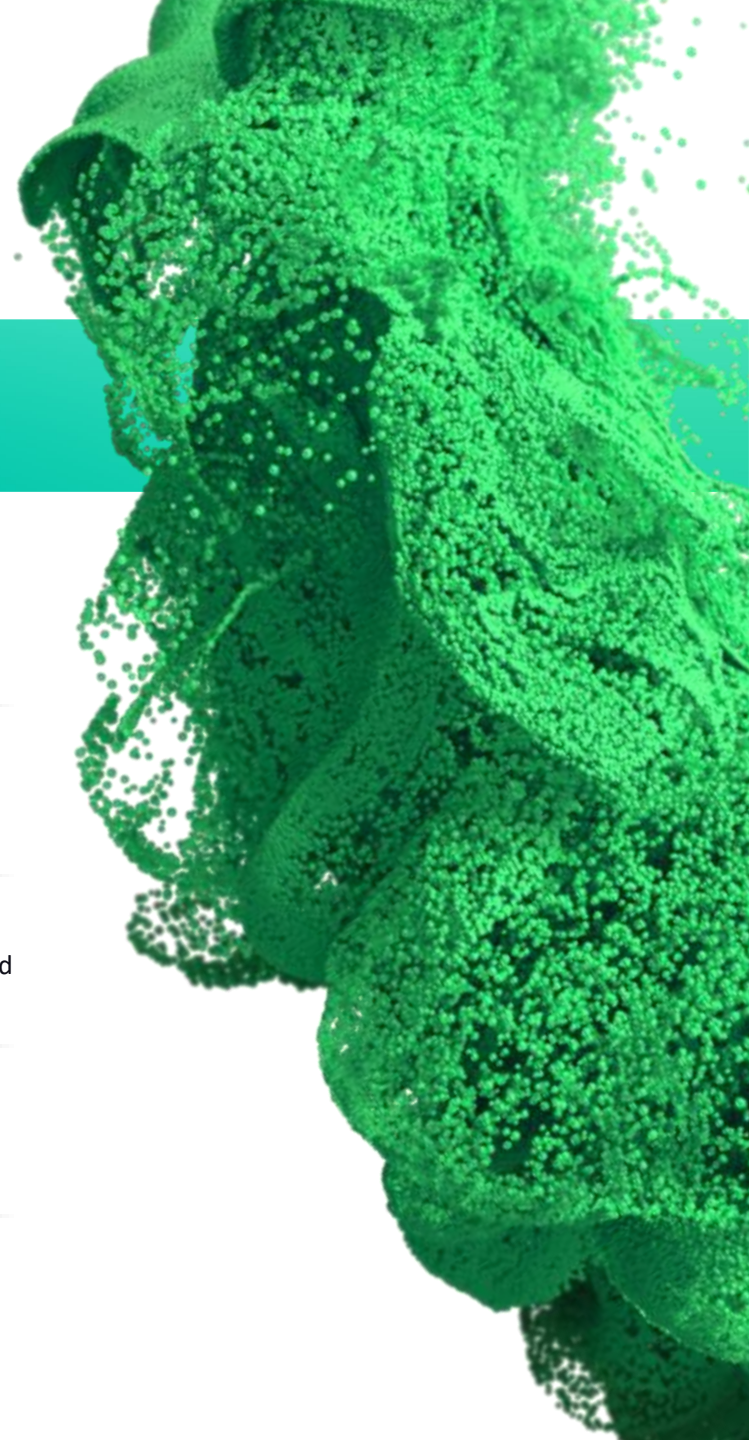
**0%** VAT on transaction of goods between  
companies located in Designated Zones in Jafza and  
outside UAE



No Currency Restrictions



Mortgage premises to a bank or  
financing Company



# NATIONAL INDUSTRIES PARK

Designated zone at the heart of Dubai's new industrial district that offers a seamless connection to the supply chain

**21** KM<sup>2</sup>

of designated land for development

**300**

Fully established entities

## Multistory Car Park

Give your cars the space they deserve in our 204,000 sqm world-class car parking facility

## Mainland Laws

## Business Center

Offering state-of-the-art amenities

## Location

accessed from Sheikh Zayed Road, Sheikh Mohammed Bin Zayed Road and the Emirates Road.

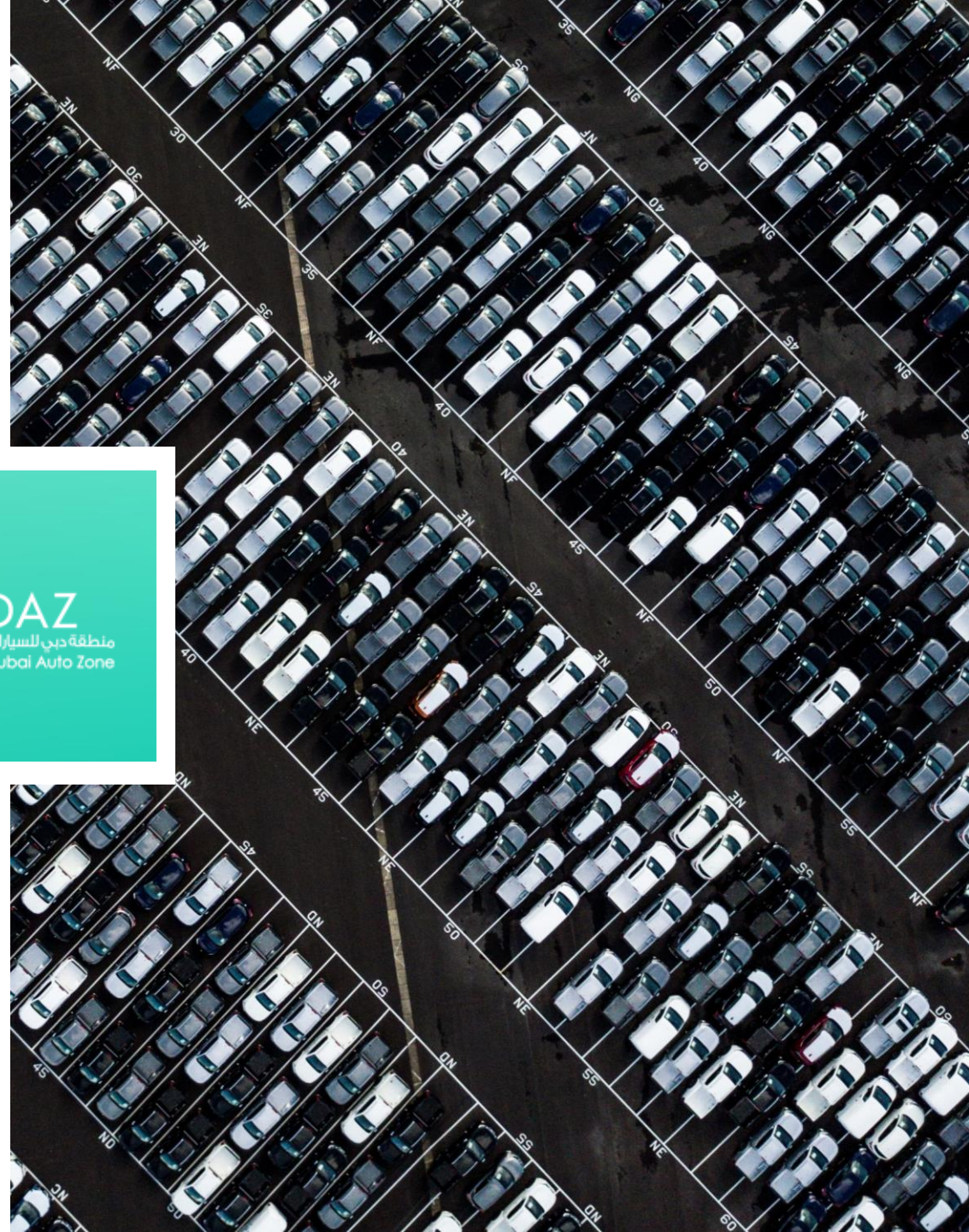




# DUBAI AUTO ZONE

DUBAI AUTO ZONE – home to the GCC's largest used car marketplace

- ✓ Only dedicated and purpose-built Free Zone Auto Market in the region
- ✓ Featuring 396 Showrooms, retail outlets, warehouses and auction houses tailor made to facilitate trade.
- ✓ Integrated eco-system facilitating all elements relating to auto trade, import and export
- ✓ In-house capabilities to provide logistical support ranging from forwarding, trucking, storage, CFS facilities etc.
- ✓ Enhanced connectivity to allow for increased access to regional customers via Jebel Ali Port
- ✓ Experienced human capital with knowledge of auto trade





# DUBAI TEXTILE CITY

AED 250 million free zone to nurture the growth of the UAE's textile industry  
Innovating and advancing the nations textile trading industry in collaboration with Texas



Area – 6 million  
sq. ft.



Warehouses,  
showrooms and  
office space for  
TEXMAS members

- ✓ 100% ownership
- ✓ No intermediaries, so costs tend to be lower
- ✓ Predictable and stable legal system
- ✓ Low operating costs
- ✓ First-rate logistics infrastructure including two 40 feet bays for each warehouse
- ✓ Easy access to airports, ports and other Emirates. Options for subleasing a warehouse
- ✓ Large community hall available at nominal charges
- ✓ Ample and free parking for customers and visitors
- ✓ Gated and secure premises



SMART TRADE SOLUTIONS

**WE DEVELOP  
TECHNOLOGY LED  
SOLUTIONS TO  
REDUCE  
INEFFICIENCIES  
ACROSS THE  
SUPPLY CHAIN**



# DUBAI TRADE

The UAE's premier trade and logistics platform, integrating all business services into one digital platform

A paperless approach to trading operations and payments

Implementing advanced technology and continuous improvement to bolster Dubai's position as the #1 trade hub

24/7 access to over 700 E-Services from key trade related entities, ensuring seamless user journey



**OVER 100M  
TRANSACTIONS**



**OVER 98%  
ADOPTION**



**OVER 100K  
ACTIVE USERS**





# DP WORLD LOGISTICS

Our in-house entity providing End to End solution ensuring your products are delivered to your customers efficiently and cost effectively

## FREIGHT FORWARDING

Sea Freight: FCL, LCL, GC, RORO, Heavy Equipment, Oversized cargo.

Air Freight: General Air Freight, Charter services, Intermodal Solutions.

Road Transportation: Trucking services, Domestic & GCC Countries

Solutions: e2e Solutions, Sea to Air Solutions, Customs clearance, Documentation, Insurance.



## CONTAINER FREIGHT STATION (CFS)

Open Storage Area 250,000 Sqm

Covered Storage Area 20,000 Sqm

Inter Terminal Transport (ITT)

Cross Stuffing & Cross Dock Solutions

Car Storage HubSolution

Jebal Ali DIT Solution (Delay in Transit)

## TRUCKING & DISTRIBUTION

Variety of Trucks: FTL, LTL, Reefer

Experienced Staff & Operators

Last Mile Delivery

Track & Trace

Fast Turn around

Insurance & Safety



## WAREHOUSING SOLUTIONS

Cool Storage 7,000 sqm, +10°C to +20°C

Cold Storage 10,500 sqm, -29°C to +13°C

Dry Warehouse 17,500 sqm

Jebal Ali Hub Storage 14,000 sqm

**VALUE ADDED SERVICE: PACKAGE / RE-PACKAGING, BARCODING, LABELLING, ASSEMBLY, INSPECTION, LASHING & SECURING**

# CREATING THE FUTURE OF TRADE

DP WORLD CARGOSPEED



**DELIVERY AT THE  
SPEED OF LIGHT**



**CHARGES AT THE  
COST OF TRUCKING**



**SUSTAINABLE  
SOLUTION FOR  
CARGO TRANSPORT**



Delivering trade at the  
speed of light for the cost  
of trucking

The first initiative of its kind  
in the world

A partnership between DP  
World and Virgin  
Hyperloop One

# TRADE FACILITATION: ECOMMERCE

eCommerce with DP World & JAFZA is multimodal, modular and open: a better fulfillment experience for cross-border eCommerce in the Middle East and Africa



## THE RIGHT ENVIRONMENT.



In collaboration with Dubai Customs and Dubai Trade, DP World will enable an optimal environment for eCommerce participants in the UAE and globally; emphasizing openness, compliance and customer centricity



## A PLATFORM THAT GROWS WITH EACH BUSINESS.



Jebel Ali is an essential gateway for regional trade; DP World will unlock the value of eCommerce in the region by enabling cross-border B2C trade and leveraging multimodal capabilities to save costs and time



# TRADE FACILITATION: JAFZA LOGISTICS PARK

Mid-size warehousing facilities provide flexibility and rapid expansion opportunities for existing and new businesses in Dubai



**5-10,000 sqm**

units with ample office space  
and amenities included



Ready to move-in

**H1 2023**



# TRADE FACILITATION: DUBAI TRADERS' MARKET

Global traders can access the Dubai Traders Market, a turnkey free zone solution for regional retail and wholesale trade



- ✓ Phase 1 opening its doors in 2021 offering **800,000m<sup>2</sup>** of multi-purpose retail and wholesale facilities
- ✓ Companies will **benefit from dual free zone** and onshore environment
- ✓ Goods move directly from the airfield or the quayside into storage areas to be available for sale
- ✓ Dubai Traders Market is located in close proximity to the Expo2020 site and offers shuttle services to the 25 million visitors expected during the 6 months event
- ✓ Once all phases are completed Dubai Traders Market will host over **20,000** global trading entities across its 60 million sqft infrastructure



# JEBEL ALI PORT AND FREE ZONE

**Thank You**

**#UAETRADECAPITAL**